

Venture II
25 Days In The Summer Of 2025

The Broughtons

I Wanted to Go Before The Pandemic

- Afterwards, Canadian acquaintances warned me to wait.
- The pandemic had hit marina owners hard.
- Some marinas had closed.
- After visiting, I concur.

Where Are the Broughtons?

- Broughton Archipelago Provincial Marine Park.
- The actual Provincial Park is divided into North and South.
 - North Boundary – Fife Sound.
 - South Boundary – Indian Channel / Blackfish Sound.
- Eastern edge of Queen Charlotte Sound.
- Between mainland BC and Vancouver Island.

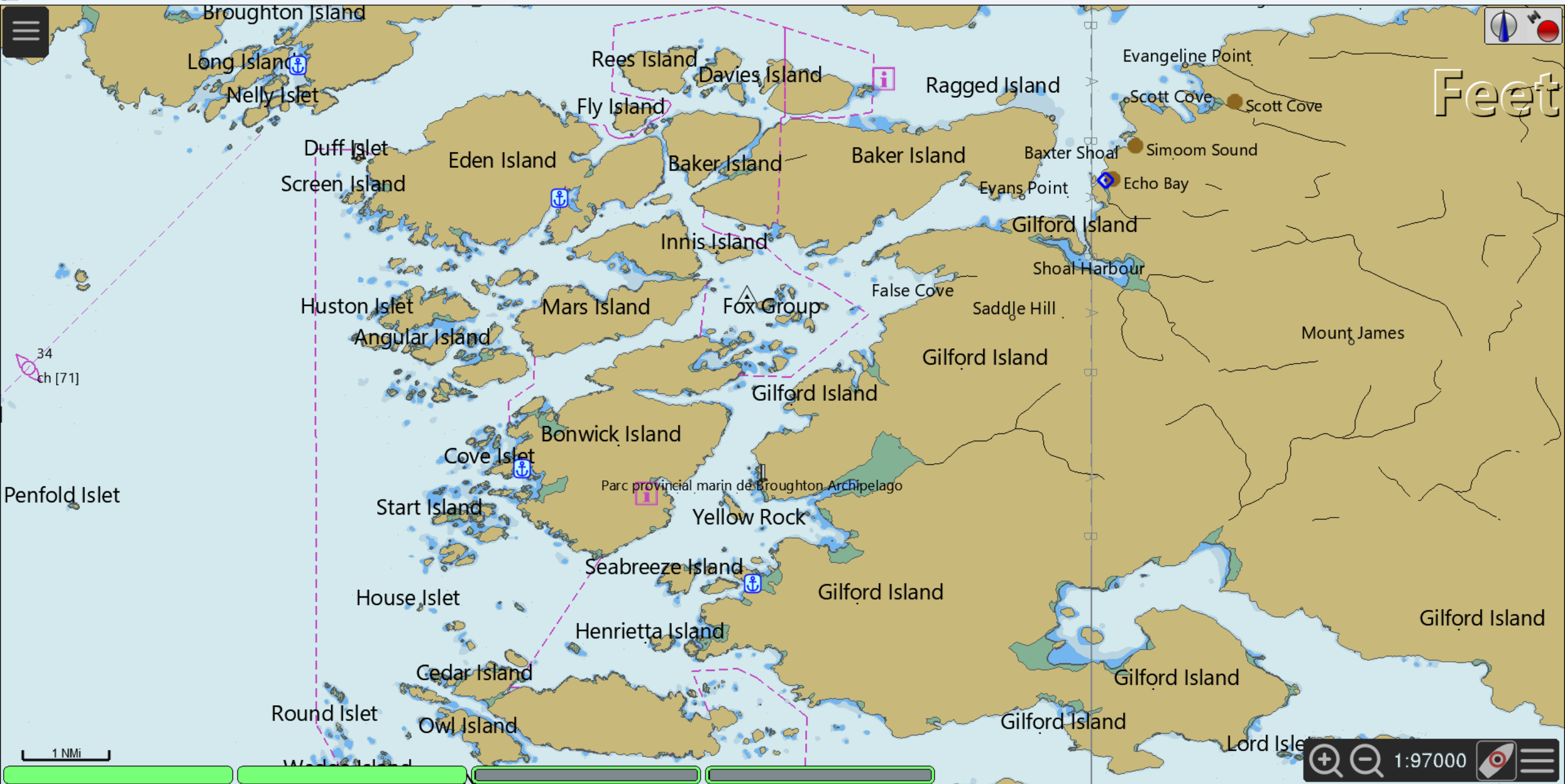


Find a park, recreatio...



5 km





Feet

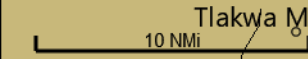
+ - 1:97000 📍 ☰

However...

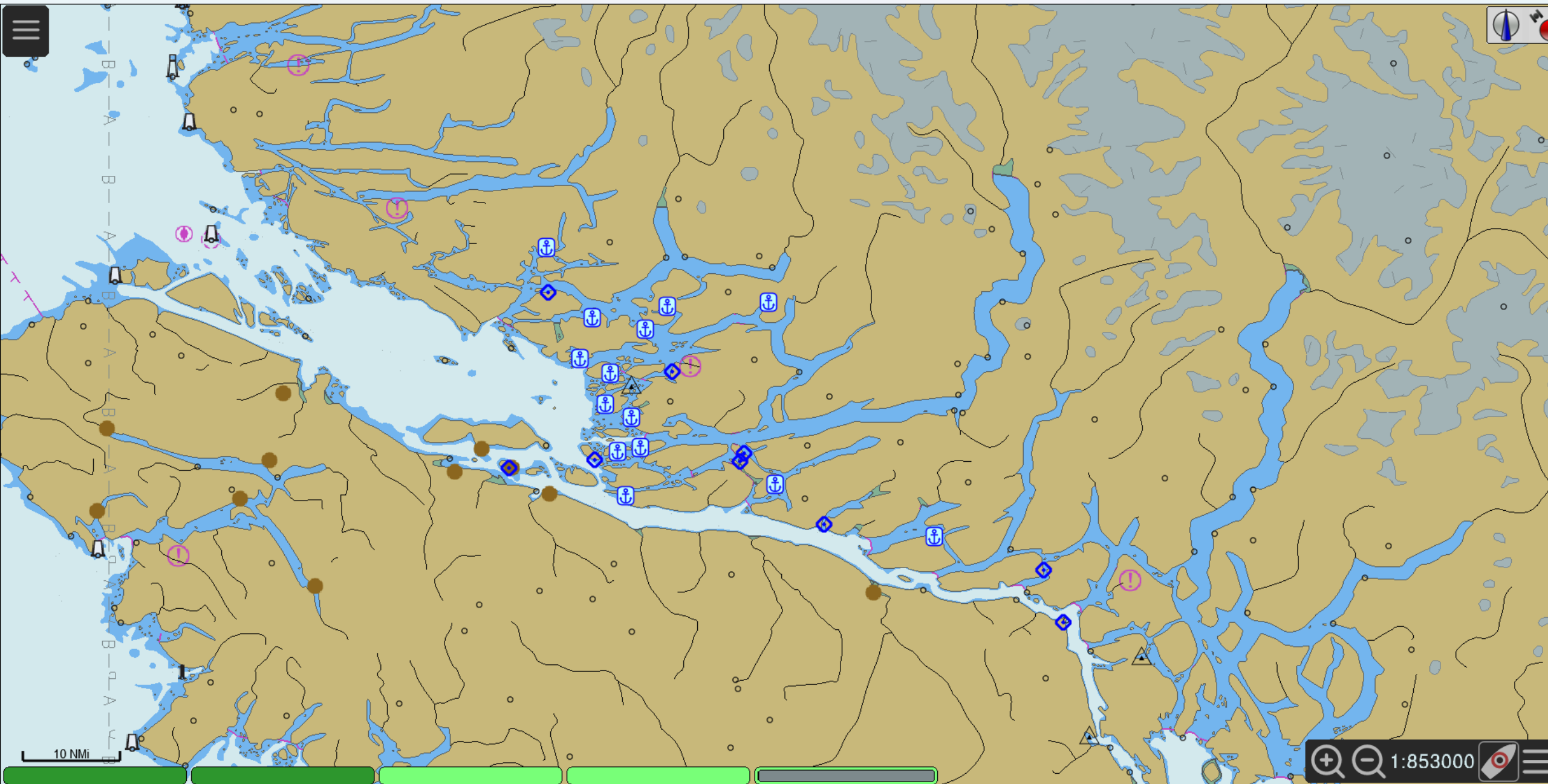
- Most would define the Broughtons, generally as:
 - North of Johnstone Strait
 - Eastern edge of Queen Charlotte Strait
 - South of the BC mainland, but including inlets and passages
 - West of the Discovery Islands



Feet



Navigation controls including zoom in (+), zoom out (-), scale 1:478000, and a compass icon.



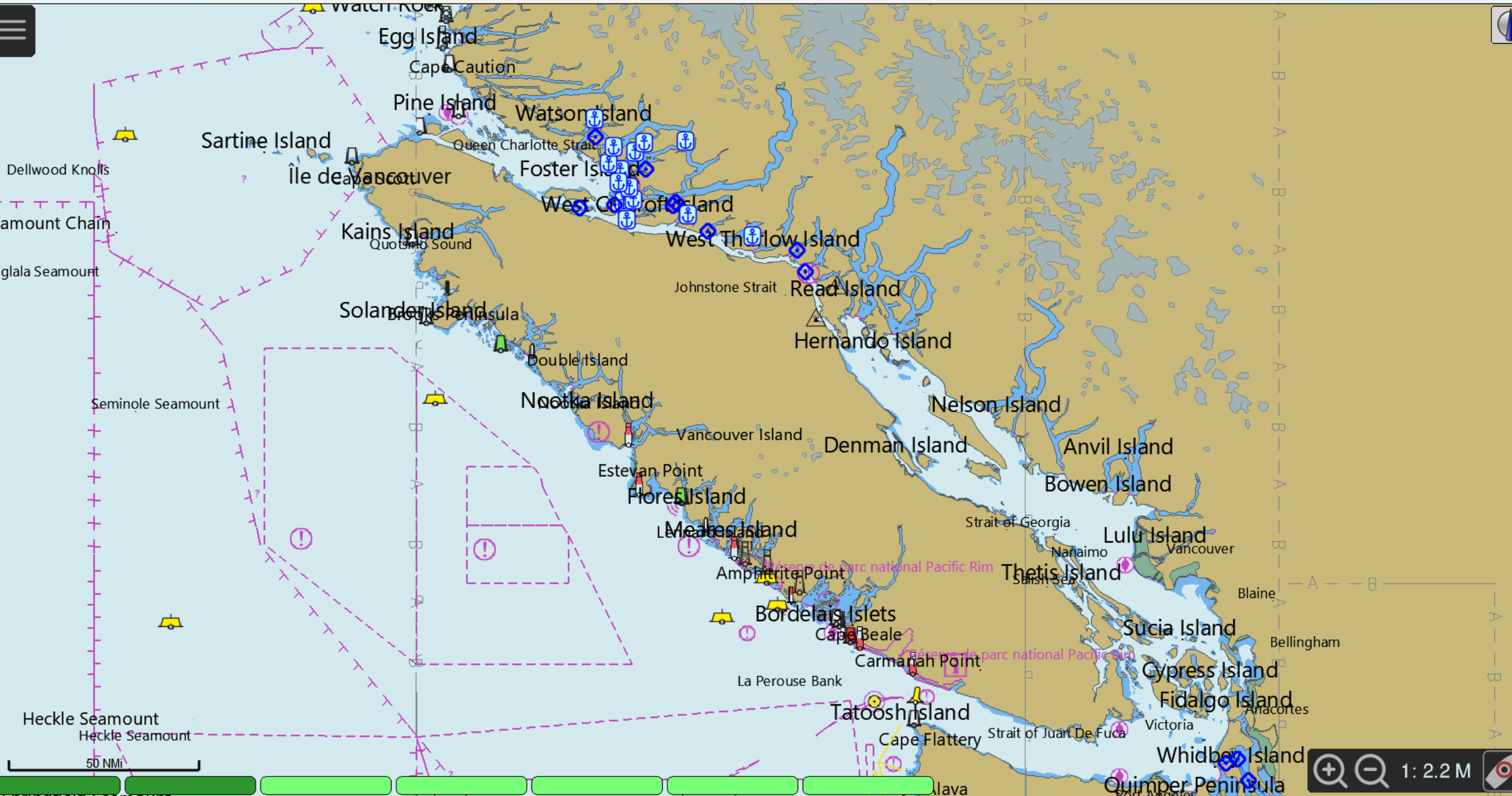
Ship 33° 21.4800' N 079° 16.9200' W

SOG --- COG ---°

50° 23.7252' N 126° 11.7560' W

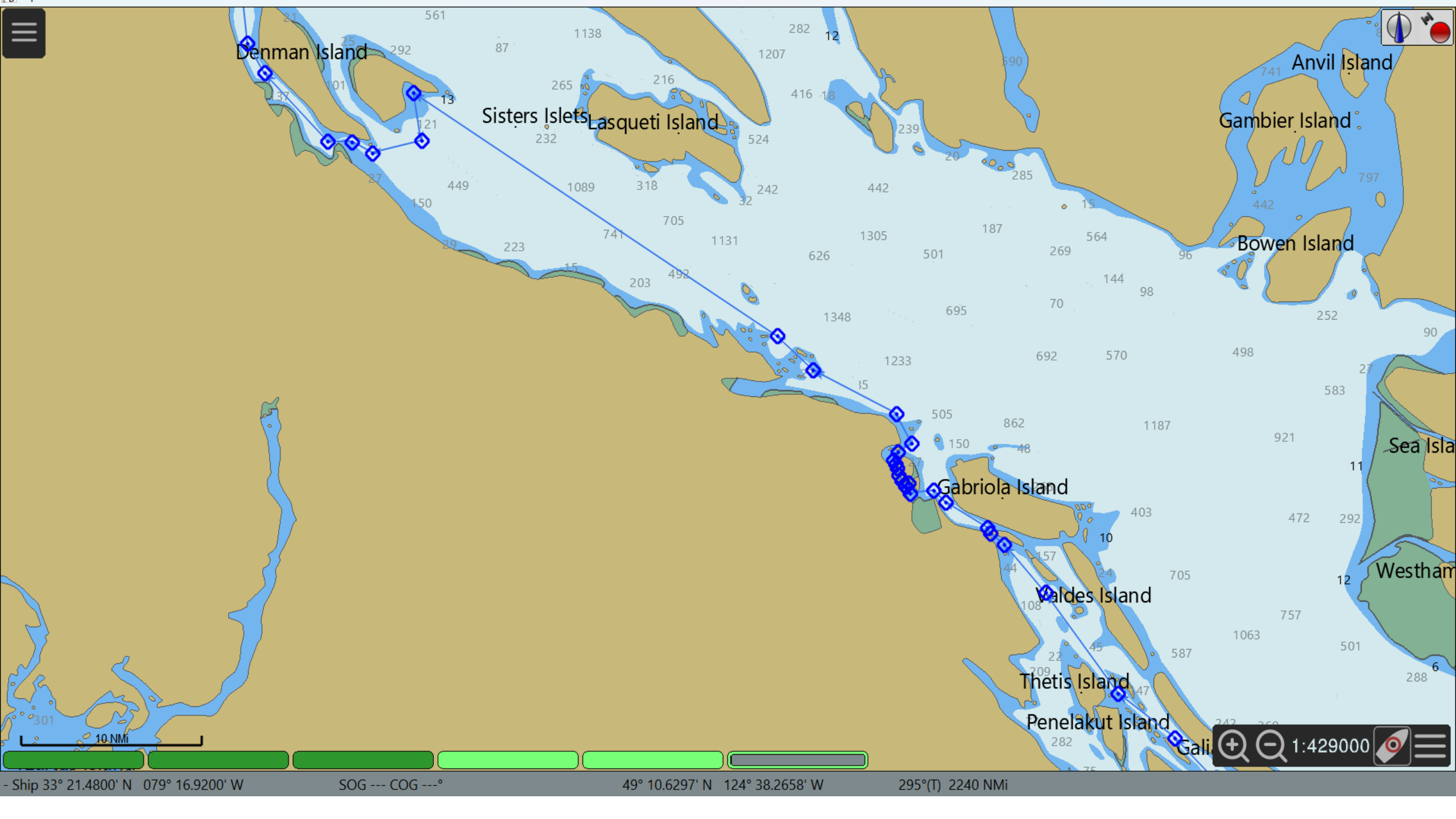
296(T) 2314 NMi

Navigation controls including zoom in (+), zoom out (-), scale 1:853000, and a compass icon.



How Does One Get There?

- Only two ways
 - Outside of Vancouver Island - Northbound
 - Really didn't feel like that
 - Inside
 - Strait of Georgia - Northbound
 - Johnstone Strait - Westbound



Denman Island

Sisters Islets
Lasqueti Island

Anvil Island
Gambier Island
Bowen Island

Gabriola Island

Waldes Island

Thetis Island

Penelakut Island

Sea Island

Westham

10 NM

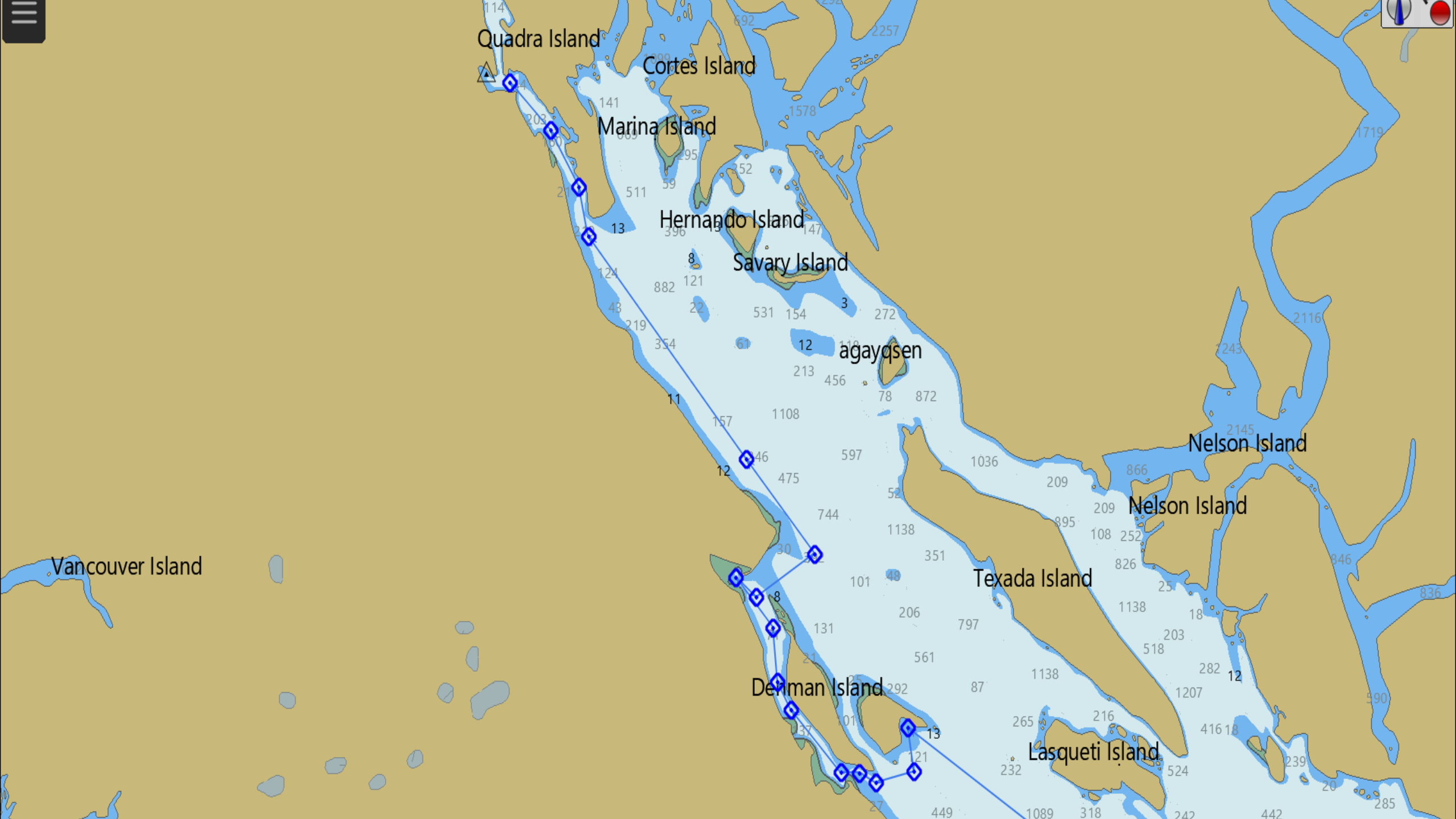
1:429000

- Ship 33° 21.4800' N 079° 16.9200' W

SOG --- COG ---°

49° 10.6297' N 124° 38.2658' W

295°(T) 2240 NMi



Quick Notes



Tribune Bay on Hornby Island

Completely open to the South

Ford Cove is a good, but small shelter in strong southerlies

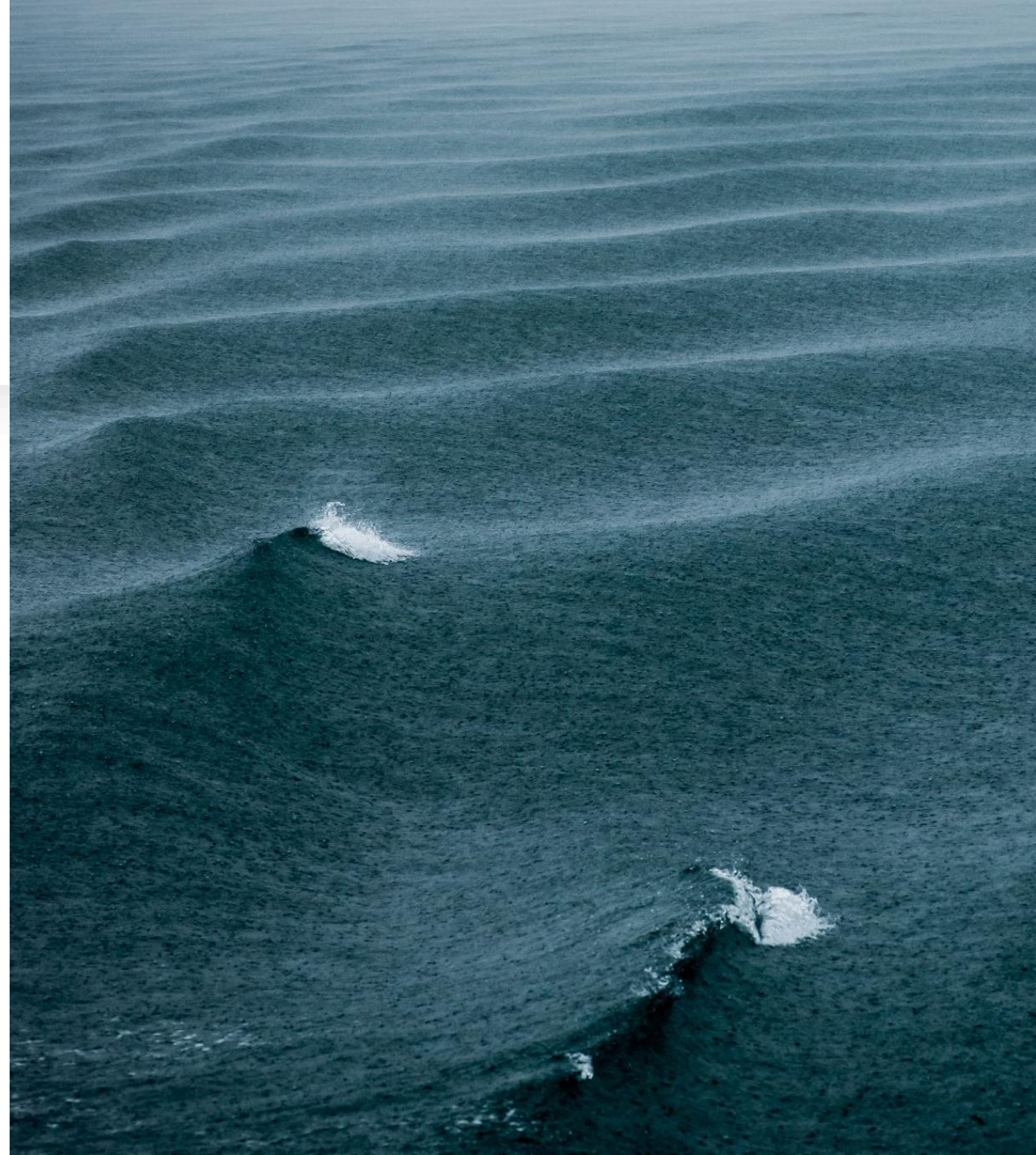


Comox Airport

Reasonable flight from PDX via Air Canada.
Stop at Vancouver.

But it's Never That Simple!

- Johnstone Strait is the goal.
 - Handful of ways to get there
 - All are passes of concern
- Seymour Narrows
- Okisollo Channel
 - Multiple rapids
- Dent Rapids
 - Too spicy for my taste





Port Neville

Strait

Hardwicke Island

West Thurlow Island

Current Passage

Race Passage

Grismond Point

Edith Point

Sonora Island

Cameleon Harbour

Okisollo Channel

Mount Menzies

Stuart Island

Sonora Island

Cameleon Harbour

Okisollo Channel

Read Island

Quadra Island

Seymour Narrows

Orange Point

Campbell River

Marina Island

Hernando Island

Phillips Arm

Frederick Arm

Cordero Channel

Lawrence Point

Mount Powell

Ramsay Arm

George Head

Raza Island

Deer Passage

Pryce Channel

Brettell Point

East Redonda Island

West Redonda Island

Sutil Channel

Viner Point

Cortes Island

Desolation Sound

Sarah Point

Malaspina Inlet

Lund

Mount Barner

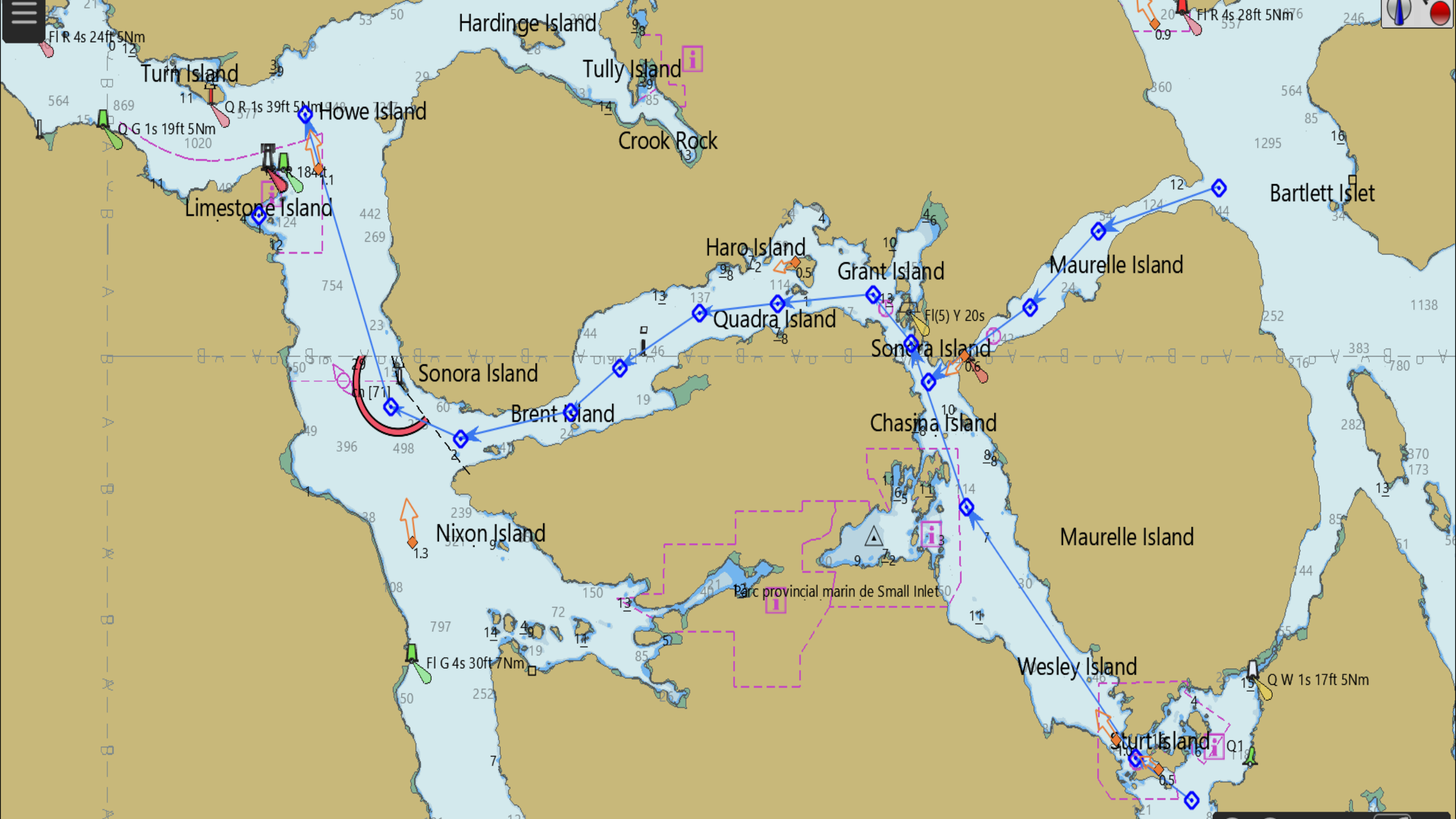
Brem Bay

Toba Inlet

Mount Denman

Mount Crawshay

Victoria Peak





Lorte Island

Noel Islet

Channe Island

Gomer Island

Denham Islet

Wink Island

East Thurlow Island

Pinhorn Islet

Block Island

Sonora Island

Little Dent Island

Jimmy Judd Island

Stuart Island

Hardinge Island

Tully Island

Crook Rock

Howe Island

Turn Island

Fl R 4s 28ft 5Nm

Q R 1s 39ft 5Nm

1020 NMi



My Route North

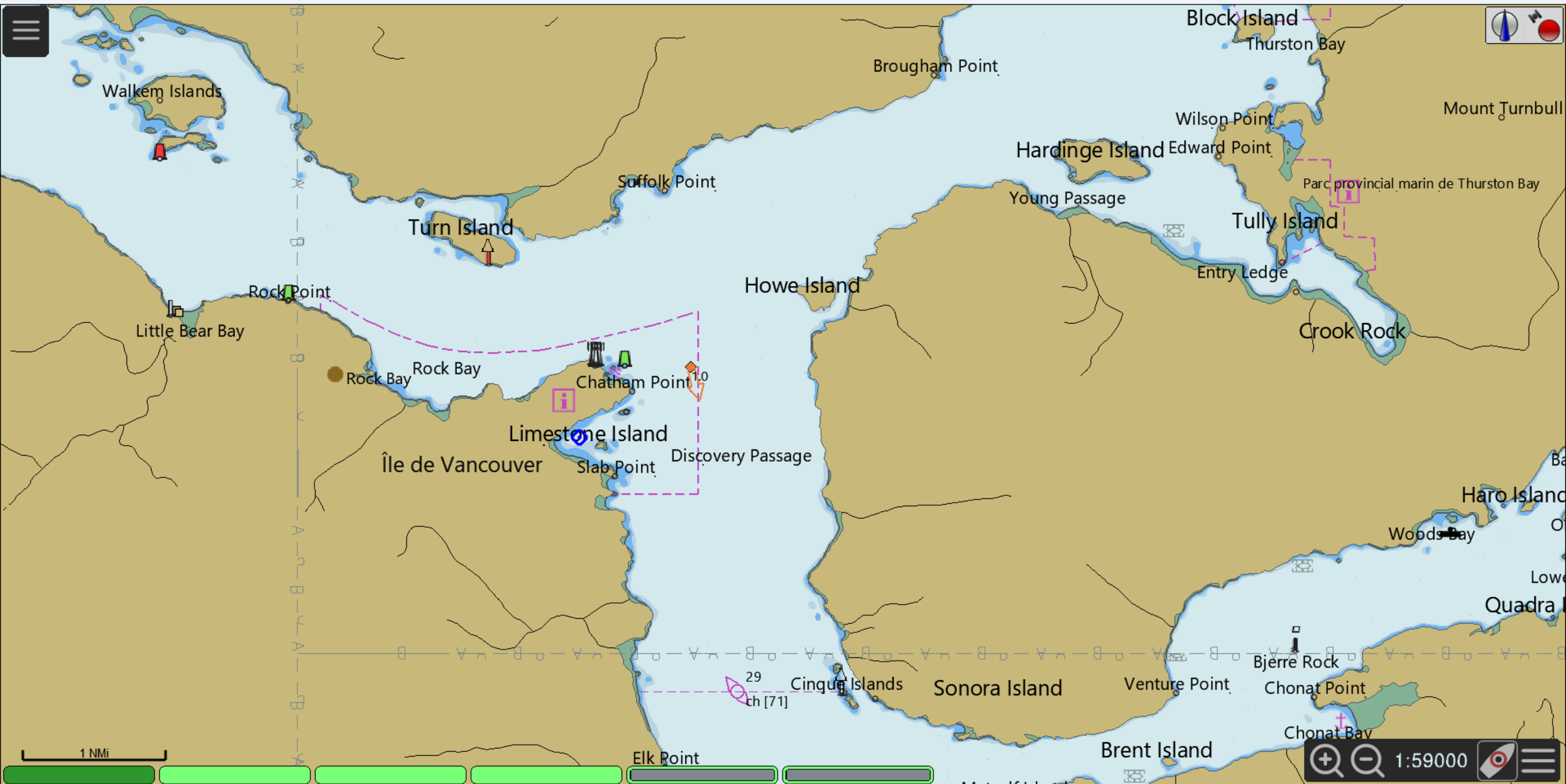
Seymour Narrows

Anchored at sunset in Menzies Bay

- Just west of the southern entrance to Seymour rapids
- Active logging and heavy equipment in the bay
- Pulled anchor @ 0415
- Slack Tide at 0500. Nautical twilight
- Ripple Rock @ 0458

Ride the Tide

- N/B current- EBB
- Took 1 hour and 45 min to get to the end of Discovery Passage
 - (Chatham Point) 13NMs
- Turning West into Johnstone Strait I received it's welcome
- 12.5 SOG with 6.5 EBB current @ Ripple Point
- AWS 38 and of course, it's on the nose

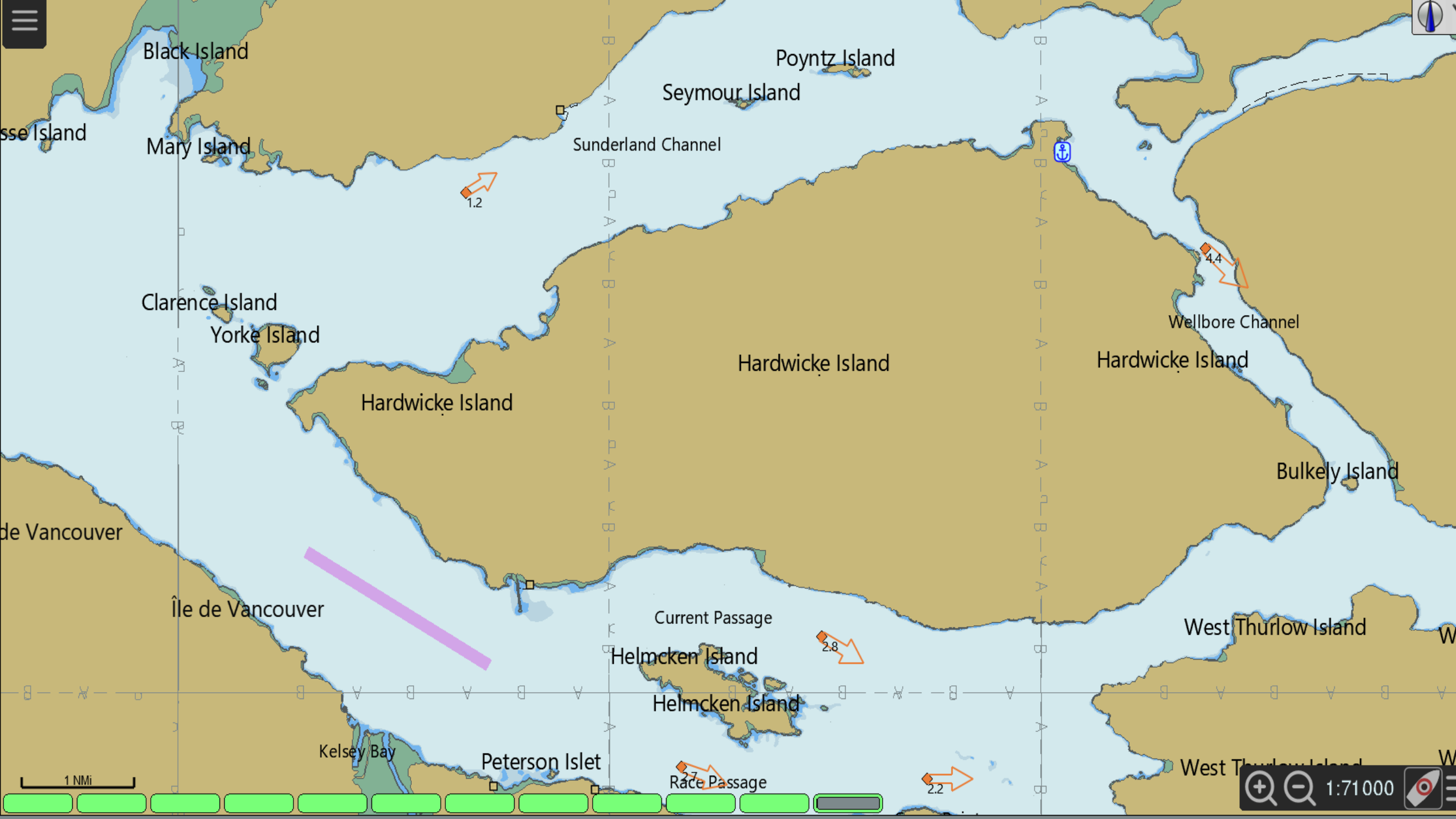


Why Go West Into Johnstone Strait?

Most recommendations are to work your way west via the channels to reduce the buffeting.

I really wanted to spend as much time in the actual park area.

Had to be back in Comox by July 24th



de Vancouver

1 NMi

Map navigation controls including zoom in (+), zoom out (-), scale (1:71 000), and a compass icon.





Port Neville

- Hans Hansen started with 120 acres in 1891
- First Post Office in the Broughtons 1895
- Government wharf in 1928
- Store closed in 1960
- Post handled here until 2010



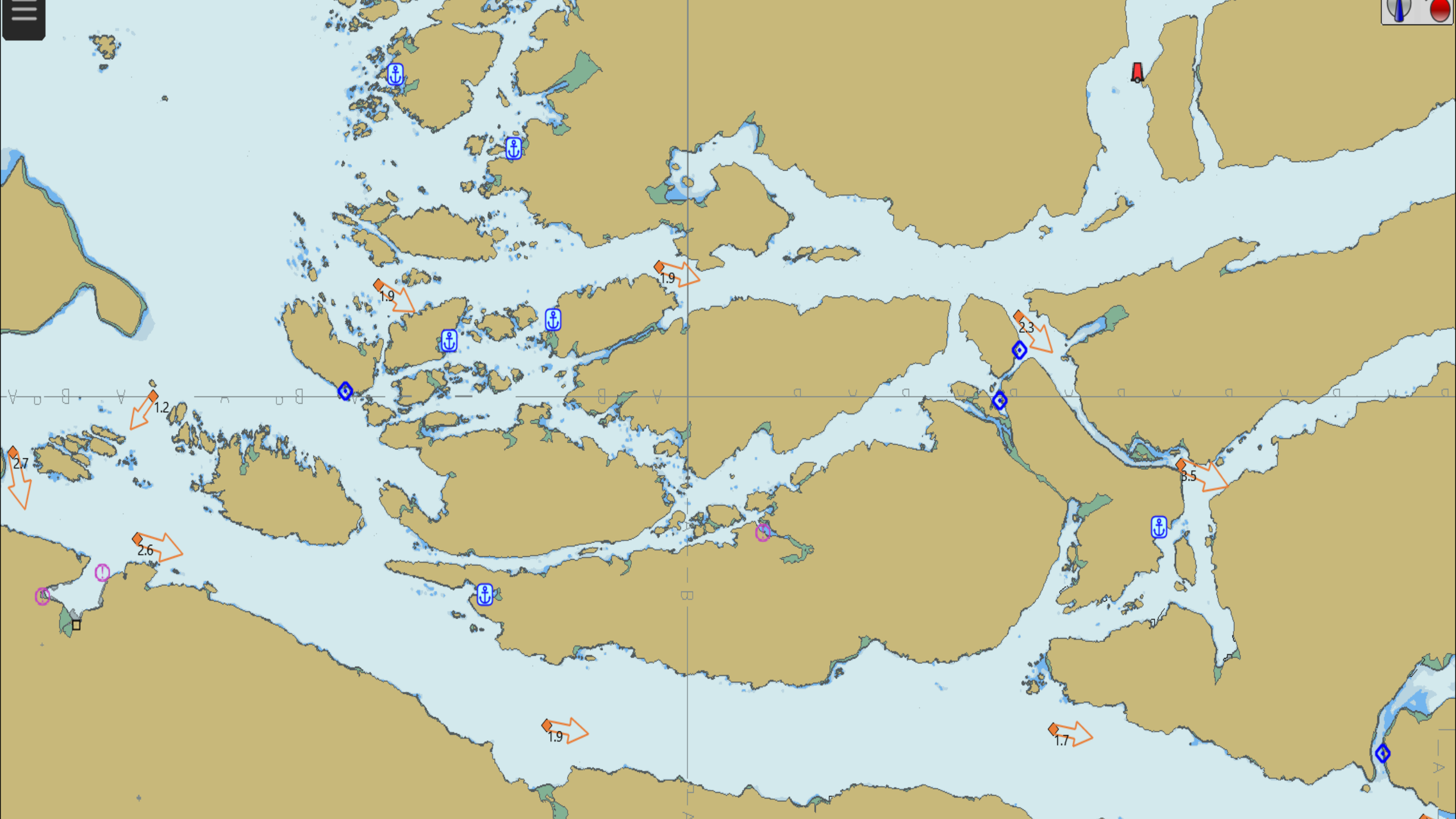
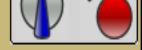
Growler Cove

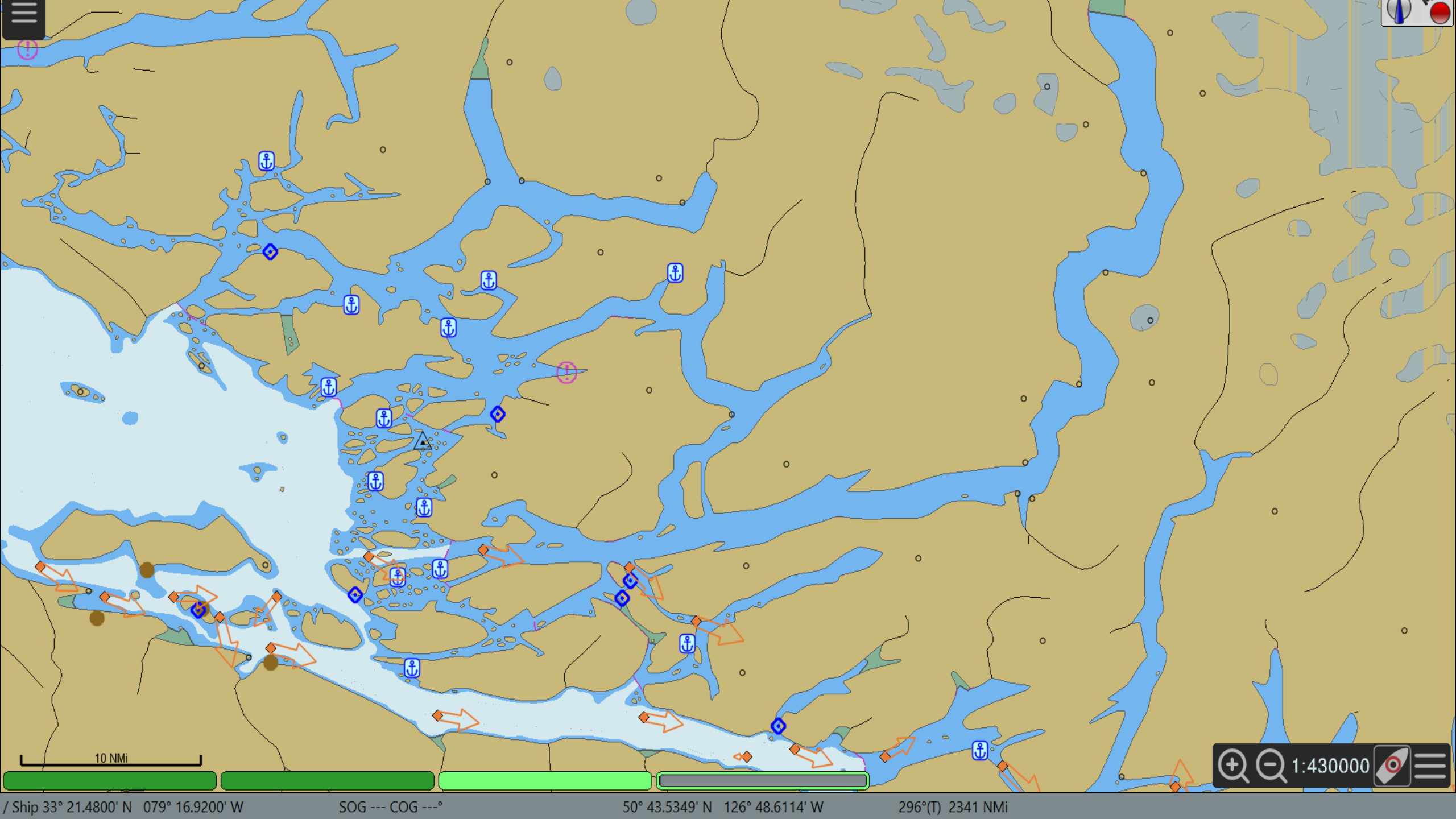
Good Anchorage

Noted in some guidebooks as
a fisherman's refuge

20 ft tide swing

Peaceful, but wet and foggy





/ Ship 33° 21.4800' N 079° 16.9200' W

SOG --- COG ---°

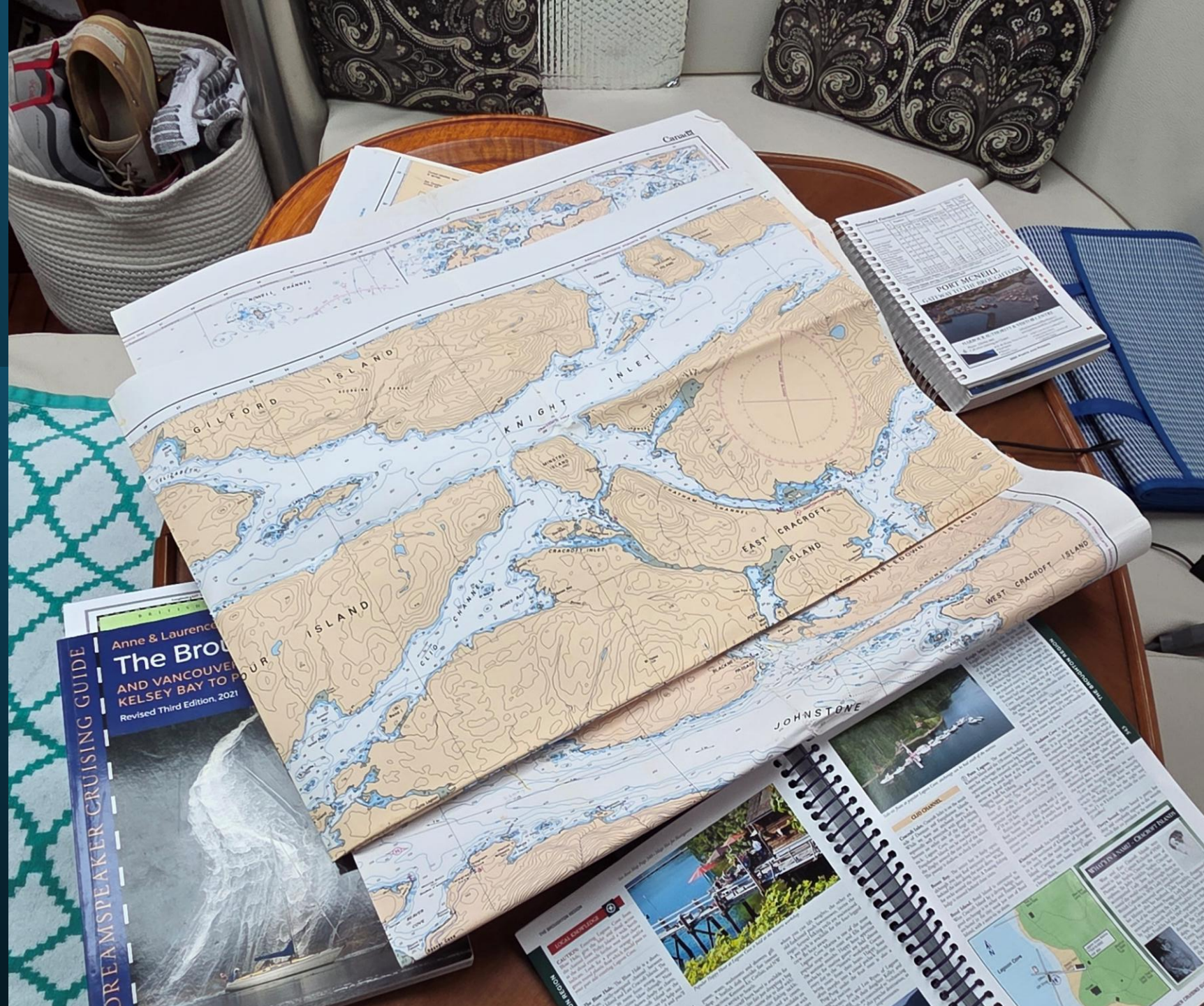
50° 43.5349' N 126° 48.6114' W

296°(T) 2341 NMi

Now What? I'm Here

- My Guides
 - Waggoners
 - Ports and Passes
 - Salish Sea Pilot
 - Dreamspeaker Guides (not as valuable for this area)
 - “Best Anchorages of the Inside Passage”
 - Old, but surprisingly enlightening
- Wildcoast Publishing, Kayak Maps

Charts & Guides Galore



A Couple Books

A Curve of Time

- M Wylie Blanchet
- Mentioned in just about every guidebook and article.
- Finally bought it.
 - Absolute respect for their adventures.

Full Moon, Flood Tide

- Billy Proctor and Alexandra Morton
- Insight to the Broughtons over the past 100 years.
- Added perspective to places I went.

Union Steamship Company History

- Maritime Highway
 - Vancouver to Alaska
 - 1889 - 1959
- Served
 - Logging Camps
 - Fishing Stations
 - Canneries
 - Small Outposts
 - “Mud and stump settlements”
 - Tourism



Where is Everybody?

- Weather was a bit damp and cool
- AIS didn't show very many boats
- Trip to Kwatsi Bay. Two boats seen.
- Two boats at the anchorage!

- Started to wonder if I mis-timed this adventure











Simoom Sound – Solitude

Walking?

Not So Much.

Limited Shore
Access.

AND ????



Wildlife

Any trails were old logging roads without direct access

BC parks warns of “Predators”

Make Noise

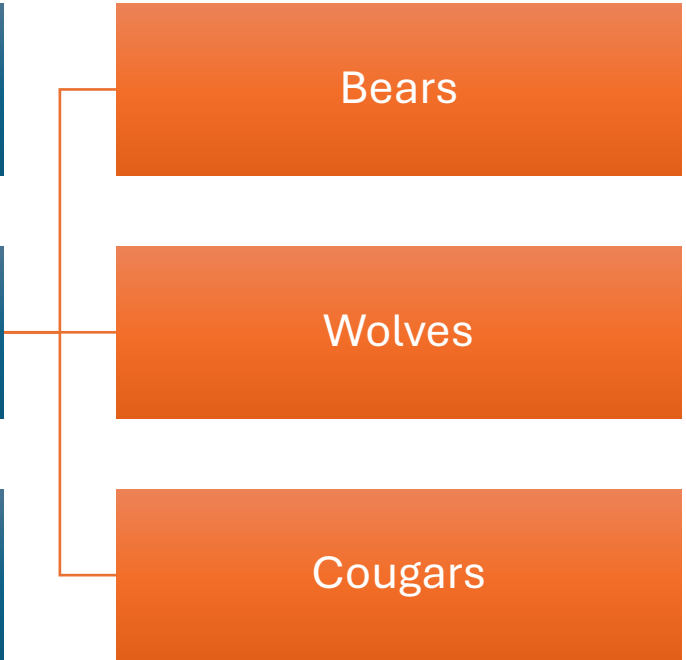
Bear Spray

Defensive Actions

Bears

Wolves

Cougars















Time to Get Off The Boat

- Echo Bay
 - A bit disappointed
 - Past reviews raved of the camaraderie and social events
 - Recent change in ownership
 - Able to walk around
 - Visit to Alexandra Morton Studio
 - Billy Proctor had just died. Museum closed.
 - He was mentioned everywhere.
 - Folk historian
 - Fisherman
 - Logger
 - Hunter
 - Known to all





Coves and Bays My Favorites

Kwatsi Bay – marina is now closed – fairly deep

Simoom Bay – cove east of McIntosh Bay

Laura Cove

Joe Cove

Cecil Island South - not Greenway Sound

Cullen Harbor, but not Booker Lagoon

Turnbull Cove, perhaps next time, Claydon Bay



Alert Bay

Public Dock, very reasonable.

Hottest showers of the trip

Restock

- Bread and “liquid bread”
- A few restaurants

Weather break. Heavy rain forecast.

- Umista Museum
- Impressive history of the tribes of the area



Alert Bay

- Umista Museum
- Worth the visit.
- Just a short walk on the waterfront from the public dock



Sullivan Bay Marina

- Surprised to see there was a lot of space
- Community of floats
- Restaurant
- Fuel
- Store
- Water
- 0900 every morning. Hot cinnamon rolls. Reserve the night before



000000
000000
000000
000000



Lagoon Cove

- Busiest Marina I'd encountered in the Broughtons
- Lived up to expectations
- Evening get-together
- Be prepared to contribute
- Marina provides fresh caught prawns from the bay
- Departed via "The Blowhole" at low tide.



Quick Stop at Minstrel Island

- East end of the Blowhole approach to Lagoon Cove
- North end of Chatham Channel
- Famous as a social gathering of some repute 100 years ago
- Is hasn't fared so well!

Yikes







Blind Channel Resort Arrival

Blind Channel Resort

- Trails
- Restaurant
- Fuel
- Good store



Points to Consider

- Yes, Johnstone Strait is windy.
- Expect fog, which can form very quickly.
- I prefer entering coves and tight places at low tide.
- Tide books are a must for planning.
- Cruise ships will give a 15-minute warning prior to arriving at tight passes.
- Cruise ships travel in twos and threes.





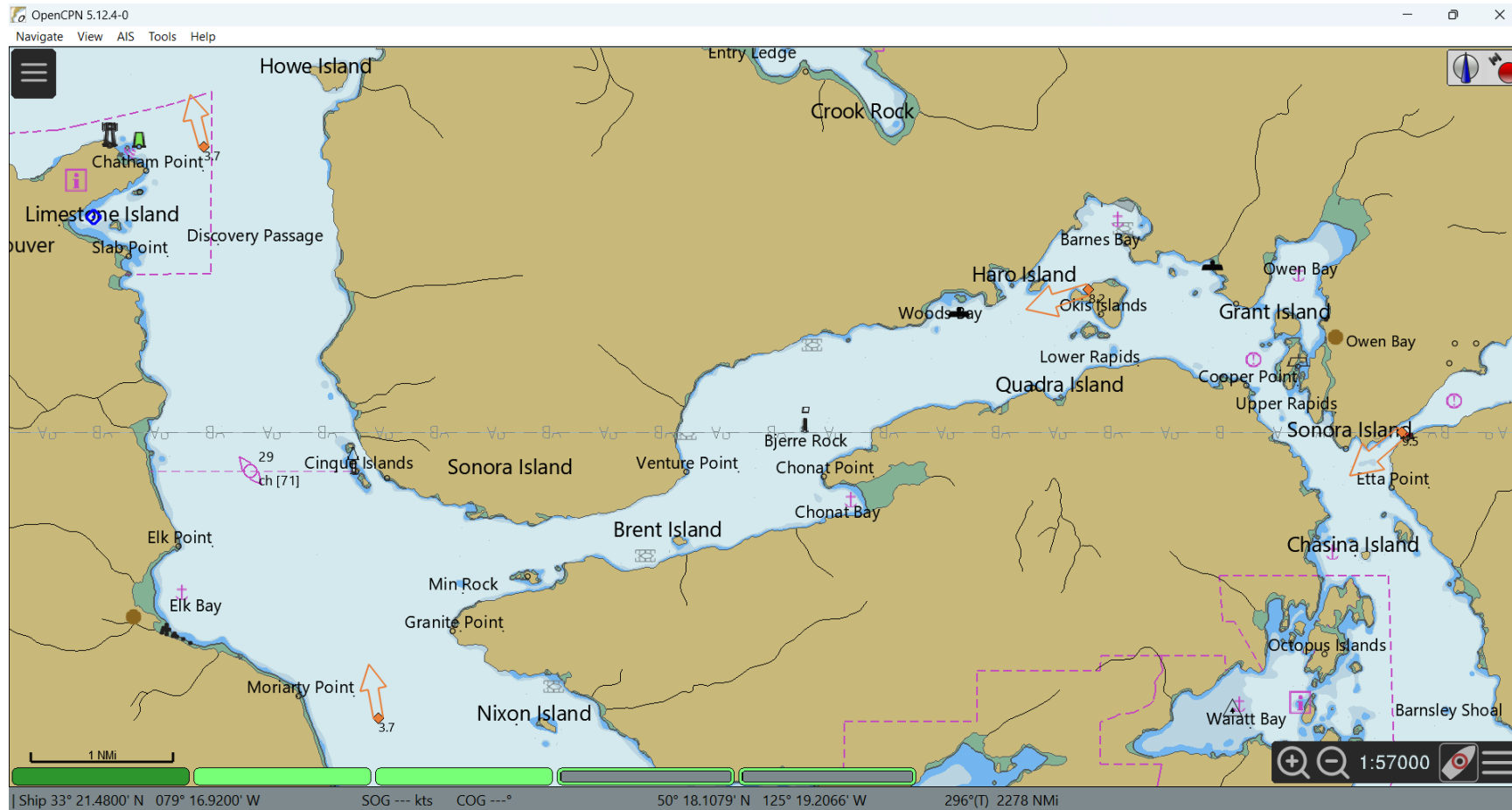




Heading South

- Nice lunch spot in Otter Cove, on the south side of Chatham Point.
- Waited for tide change & timing @ Upper and Lower Rapids in Otter Cove.
- Route through Okisollo Channel.
- Passed on the North side of Okis Island to avoid Lower Rapids.
- Quick dinner floating in Owen Bay before entering the Upper Rapids.
- Anchor in Wiatt Bay / Octopus Islands.

Otter Point & Okisollo Channel



Missed Places, I'd Like to Explore



Sointula, on Malcomb Island.



Mound Island



Burdwood Group, sailed around, but didn't anchor



Behind Indian Island, stayed at Burial Cove instead
[Havannah Channel]



Telegraph Cove – Fire burned the dock during the winter



Loughborough Inlet- wonderful sailing



New Vancouver



Disappointments,
there are a few

Mamalilakula

- The abandoned First Nation Village.
- Followed the protocol to get permission to go ashore-No response
- Had anchored in the bay by their new dock

Waddington Bay – Go next door to Grebe Cove

- Boats circling, awaiting others to pull anchor

Billy Proctor's Museum - closed

Booker Lagoon – Others had given it high marks

Goat Island – Had to anchor in the approach channel



Seymour Inlet

Watson Island

North Broughton Island

Broughton Island

Eden Island

Foster Island

Bonwick Island

Malcolm Island

Hanson Island

West Cracroft Island

Hardwicke Island

Nugent Sound

Frederick Sound

Mount Benedict

Wakeman Sound

Upton Point

Mount Everingham

Kingcome Inlet

Mount Sophia

Bond Sound

Tribune Channel

Mount Read

Thompson Sound

Mount Wakefield

Viscount Island

Mount Hawkins

Mount Scriven

Chatham Channel

Call Inlet

Havannah Channel

Port Neville

Robson Bight

Johnstone Strait

Mount Everard

Mount Dyer

Axe Point

Cascade Point

Mount Kennedy

Mount Young

Sallie Point

Duncan Point

Knight Inlet

Loughborough Inlet

Grismond Point

Shelter Bay

Richards Channel

Gordon Islands

Hardy Bay

Coal Harbour

Rupert Inlet

tsos Inlet



Feet

10 Nmi

1:448000



A photograph of a sailboat on a body of water, with mountains in the background. The image is dimly lit, and the text 'The End' is overlaid in the center. The sailboat's mast and rigging are visible, and a small yellow and blue inflatable boat is in the water nearby.

The End

