

SOURCE

1/4 bottom coverage
partial bottom coverage
partial bottom coverage

1990-2010
1940-1990
1900-1939

SOURCE DIAGRAM

The outlined areas represent the limits of the most recent hydrographic survey information that has been evaluated for charting. Surveys have been conducted in this diagram by date and type of survey. Channels maintained by the U.S. Army Corps of Engineers are periodically resurveyed and are not shown on this diagram. Refer to Chapter 1, Listed States Coastal Data.

LOCAL MAGNETIC DISTURBANCE
(see note)

NOTE B
SOUNDING DATUM

The sounding datum of this chart is Columbia River Datum except within the heavy dashed magenta outline, where the sounding datum outside of the channel is the mean low water.

NOTE A

Navigation regulations are published in Chapter 2, U.S. Coast Pilot 7. Additional information to Chapter 2 are published in the Notice to Mariners. Information concerning the magnetic meridian at the center of the Columbia River can be found in the U.S. Coast Pilot 7, Columbia River, or at the Office of the District Engineer, Corps of Engineers in Seattle, Washington.

Refer to charted regulation section numbers.

NOTE C

The NOAA Weather Radio stations listed below provide continuous weather broadcasts. The reception range is typically 20 to 40 nautical miles from the antenna, but can be as much as 100 nautical miles for stations at high elevations.

Station	Frequency
Asotin, OR	KSC-91 162.500 MHz
Naselle, OR	WWF-94 162.425 MHz
Clatsop, OR	WVW-95 162.475 MHz
Olympia, WA	WOM-60 162.475 MHz
Portland, OR	KIG-98 162.550 MHz

LOCAL MAGNETIC DISTURBANCE
(see note)

Differences of as much as 3° from the normal variation may be expected within the areas of this chart.

HORIZONTAL DATUM

The horizontal reference datum of this chart is North American Datum of 1983 (NAD 83), which for drawing purposes is considered equivalent to the World Geodetic System of 1984 (WGS 84). Geographic positions referred to the North American Datum of 1983 must be corrected an average of 6.0 arc seconds and 4.4 arc minutes to agree with this chart.

NOTE D

Report all spills of oil and hazardous substances to the National Response Center via 1-800-424-8802 (hot line), or to the nearest U.S. Coast Guard facility. Telephone communication is impossible 24 hours a day.

NOTE E

Radars reflectors have been placed on many floating aids to navigation. Individual radar reflector identification on these aids has been omitted from this chart.

NOTE F

Beaver Block/Columbia River Damages to the South of Bunker Hill Bridge at Crims Island

Beaver Block/Columbia River Damages to the South of Bunker Hill Bridge at Crims Island

NOTE G

Mariners should obtain local knowledge before navigating these waters due to the existence of hazardous shoal areas.

NOTE: CONSULT THE COPY OF ENGINEER'S FOR CHANGES SUBSEQUENT TO THIS EDITION.

NOTE H

Beaver Block/Columbia River Damages to the South of Bunker Hill Bridge at Crims Island

Beaver Block/Columbia River Damages to the South of Bunker Hill Bridge at Crims Island

NOTE I

Beaver Block/Columbia River Damages to the South of Bunker Hill Bridge at Crims Island

Beaver Block/Columbia River Damages to the South of Bunker Hill Bridge at Crims Island

NOTE J

Beaver Block/Columbia River Damages to the South of Bunker Hill Bridge at Crims Island

Beaver Block/Columbia River Damages to the South of Bunker Hill Bridge at Crims Island

NOTE K

Beaver Block/Columbia River Damages to the South of Bunker Hill Bridge at Crims Island

Beaver Block/Columbia River Damages to the South of Bunker Hill Bridge at Crims Island

NOTE L

Beaver Block/Columbia River Damages to the South of Bunker Hill Bridge at Crims Island

Beaver Block/Columbia River Damages to the South of Bunker Hill Bridge at Crims Island

NOTE M

Beaver Block/Columbia River Damages to the South of Bunker Hill Bridge at Crims Island

Beaver Block/Columbia River Damages to the South of Bunker Hill Bridge at Crims Island

NOTE N

Beaver Block/Columbia River Damages to the South of Bunker Hill Bridge at Crims Island

Beaver Block/Columbia River Damages to the South of Bunker Hill Bridge at Crims Island

NOTE O

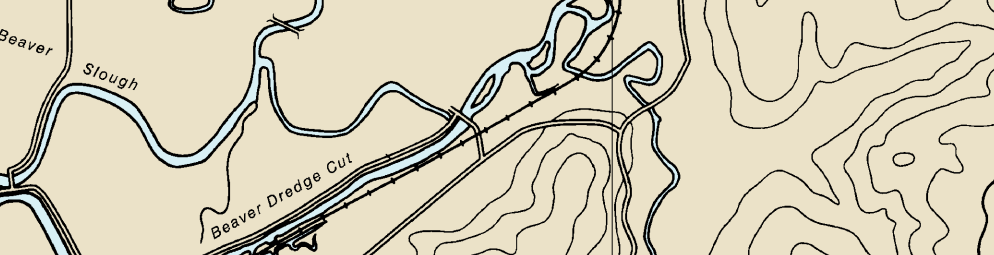
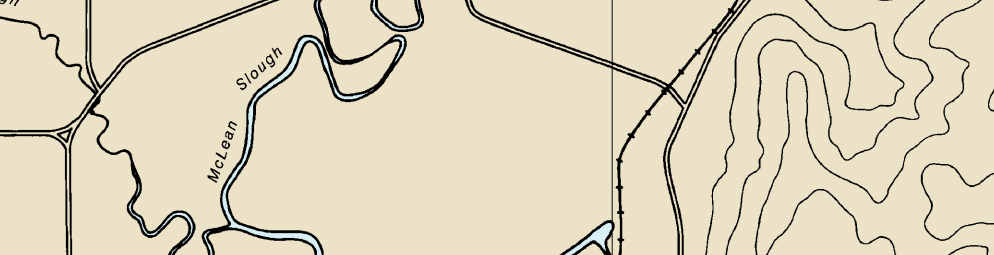
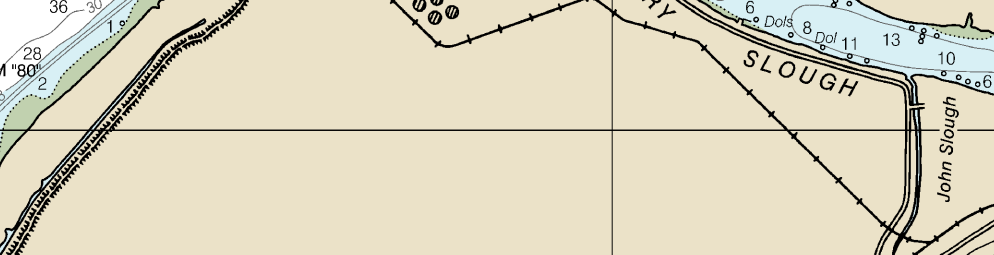
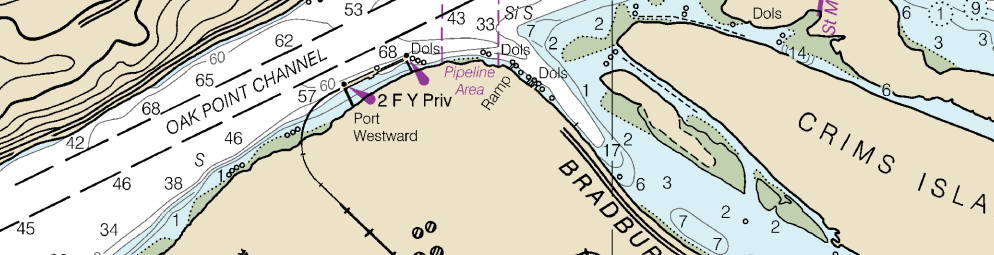
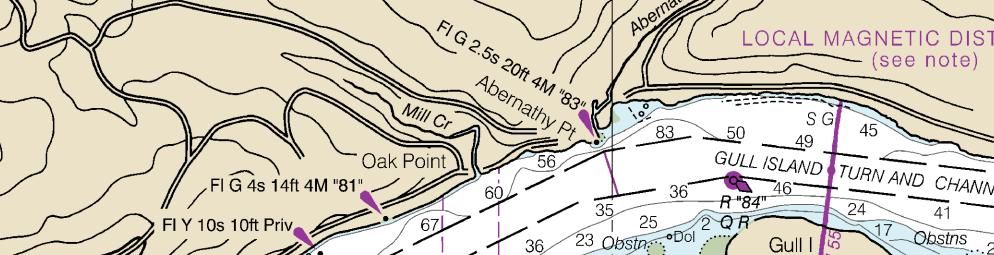
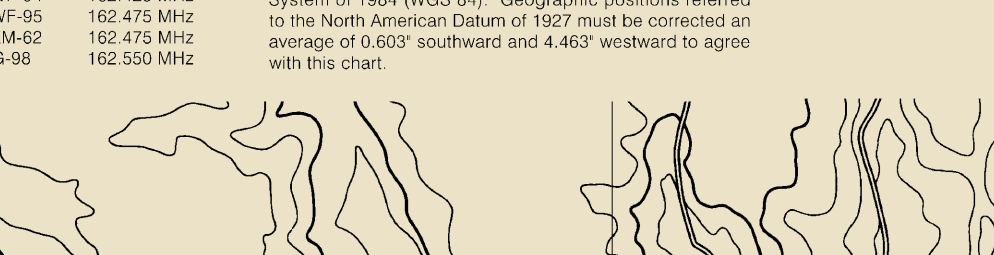
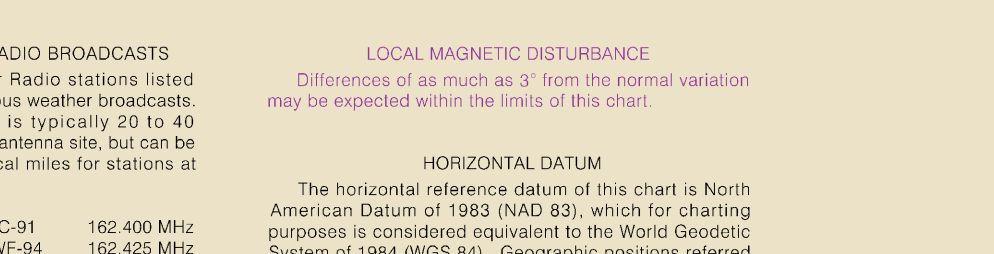
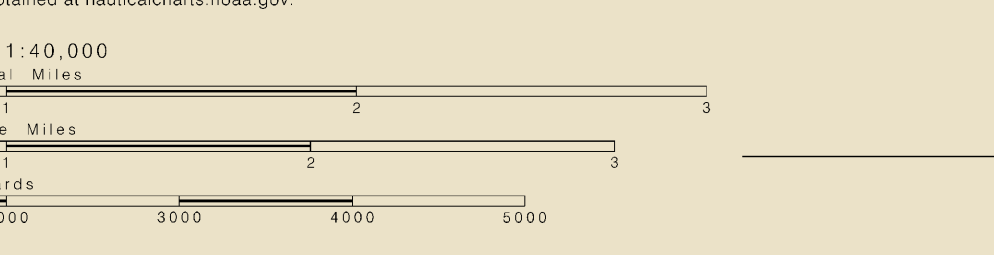
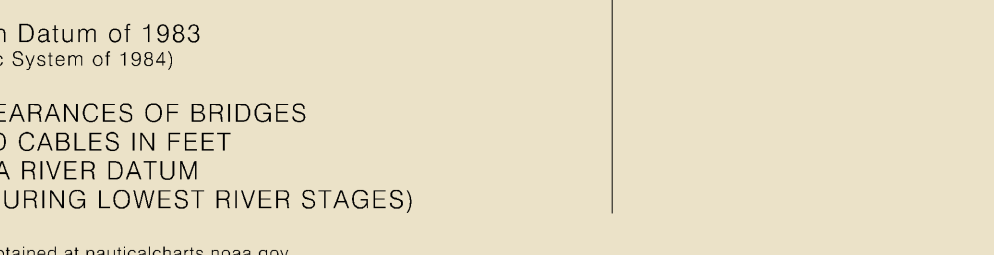
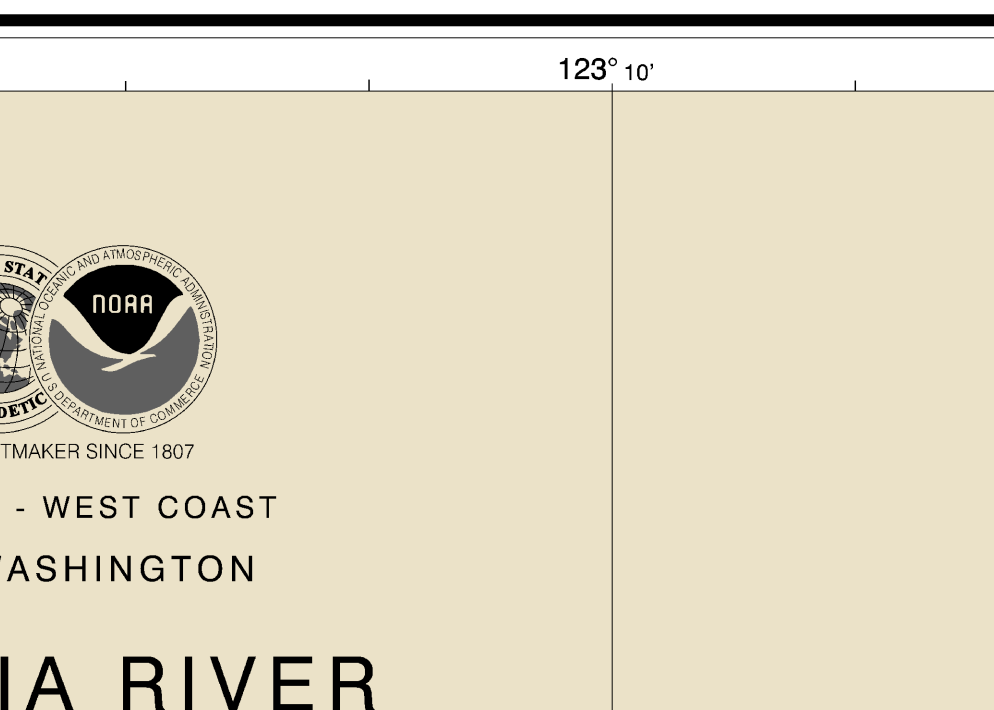
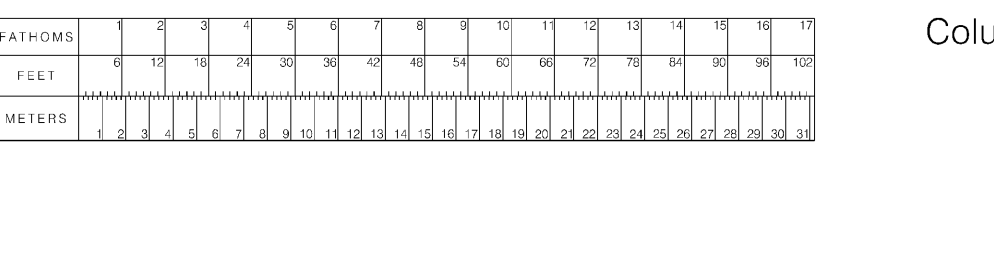
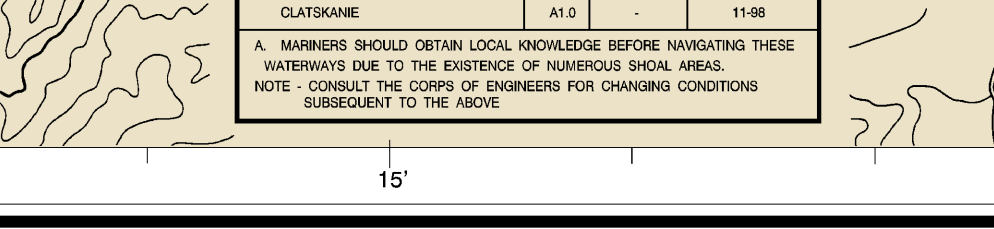
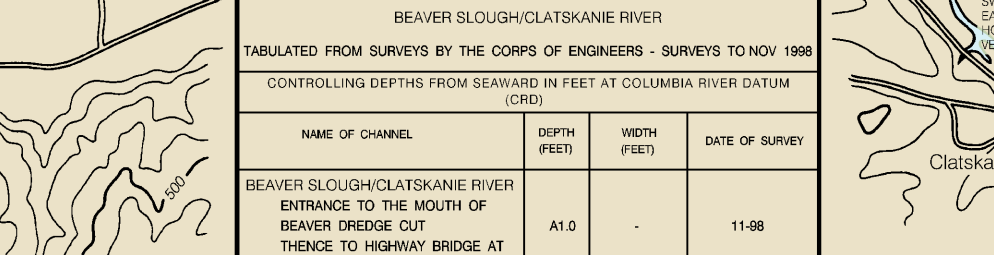
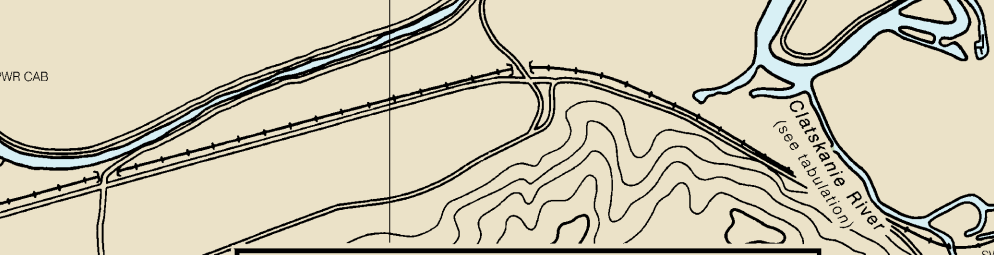
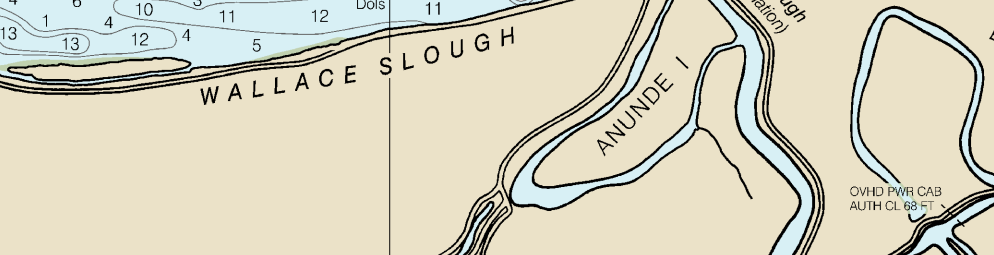
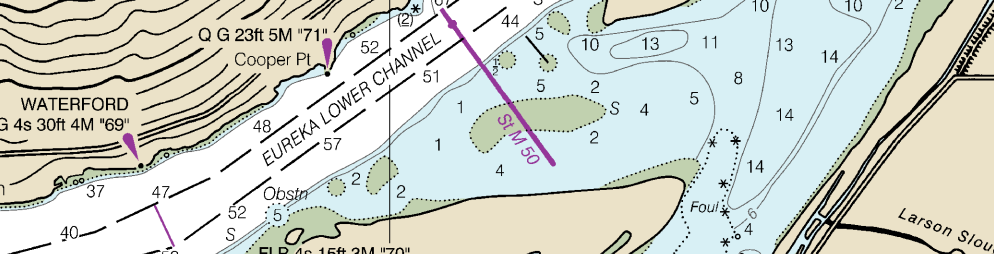
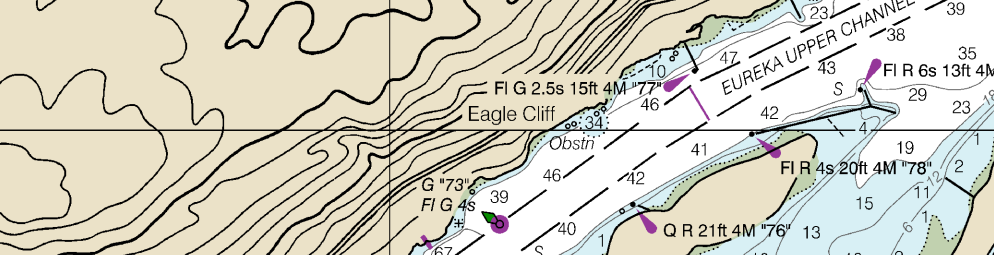
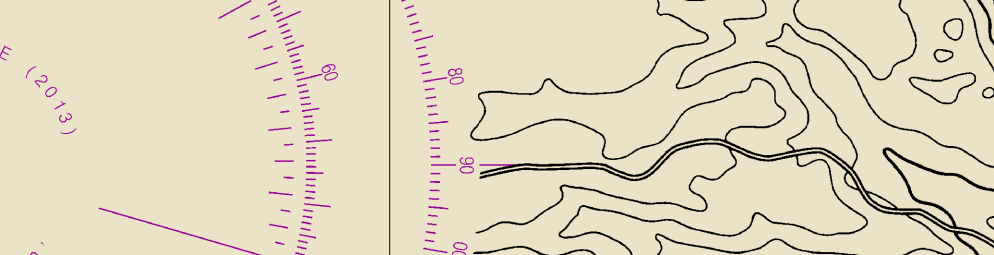
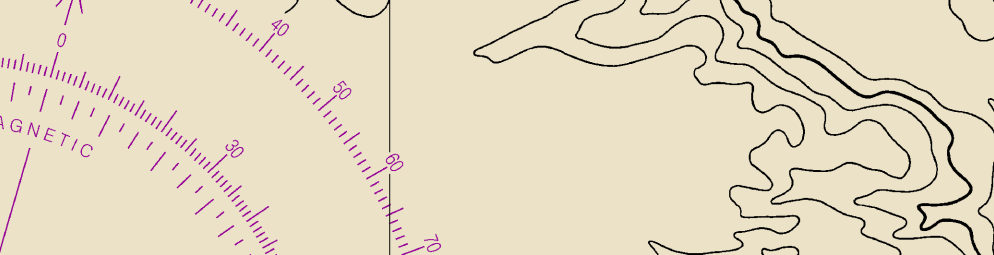
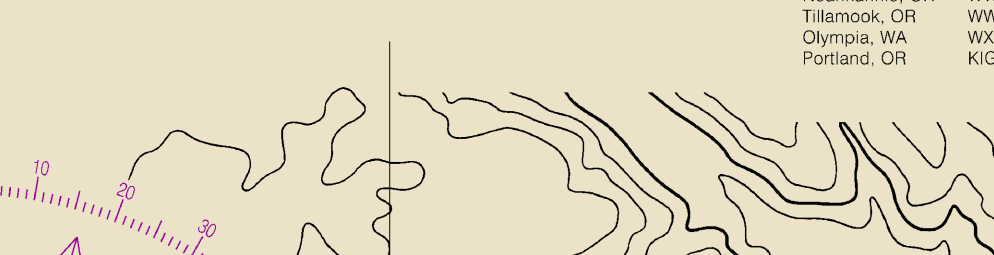
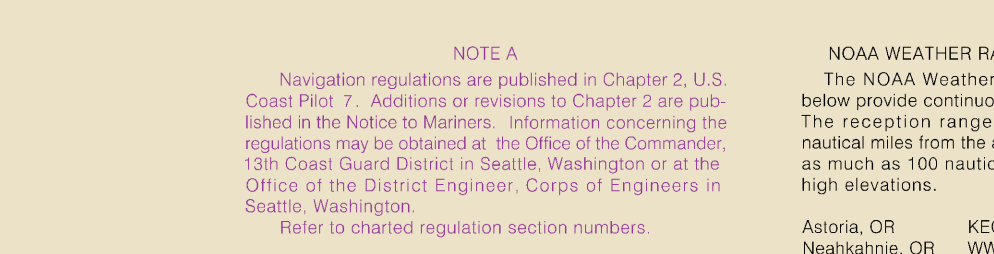
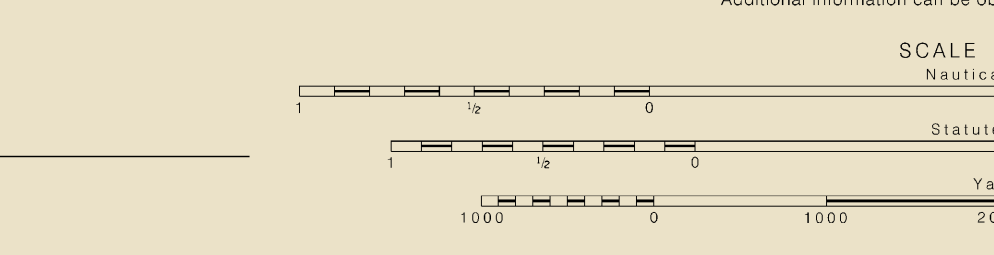
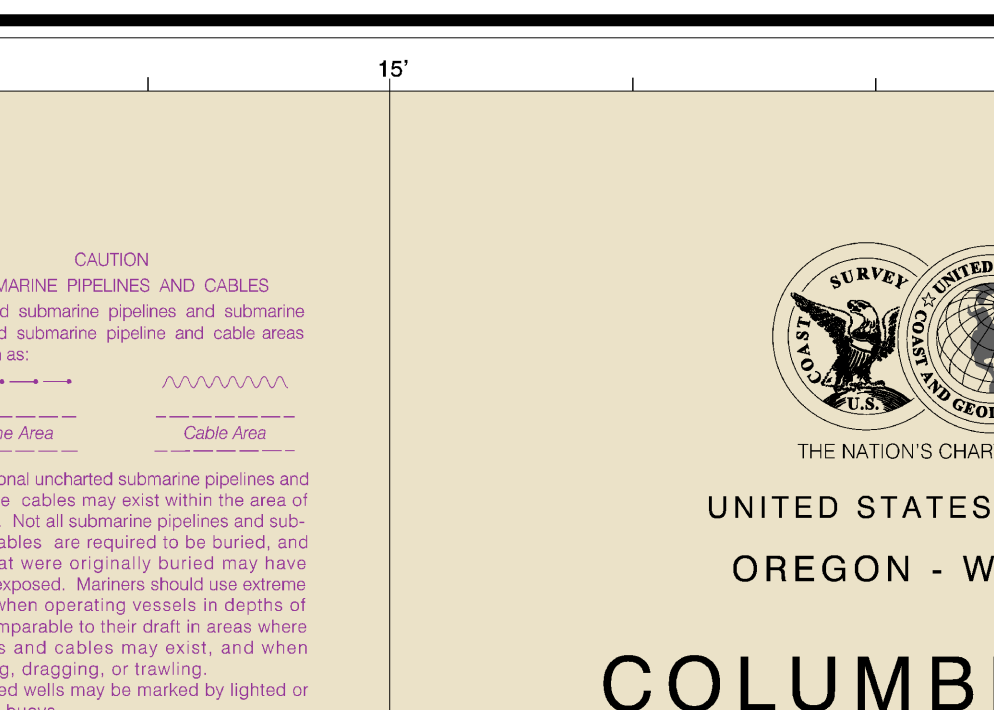
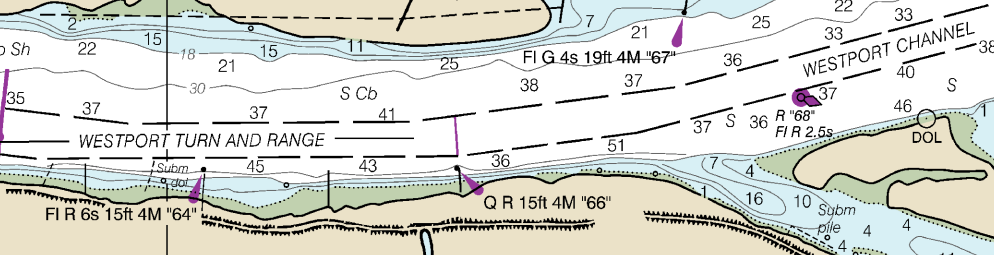
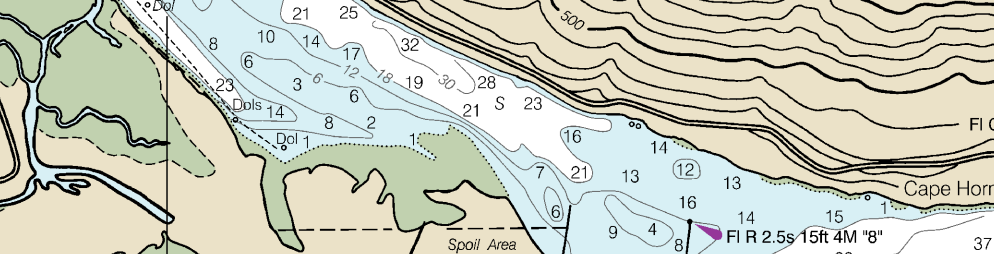
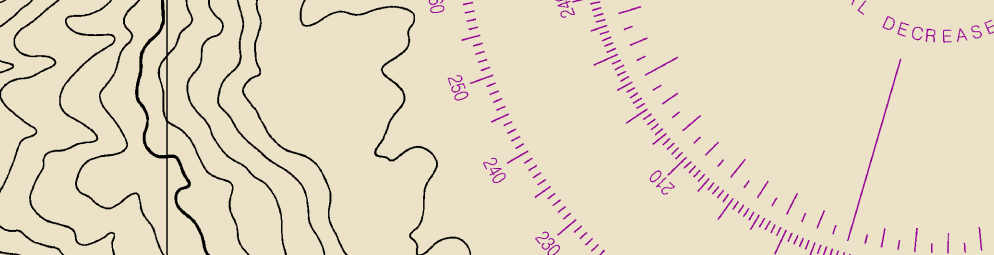
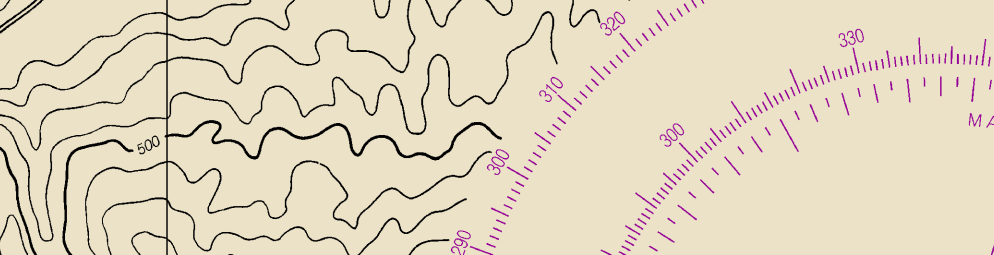
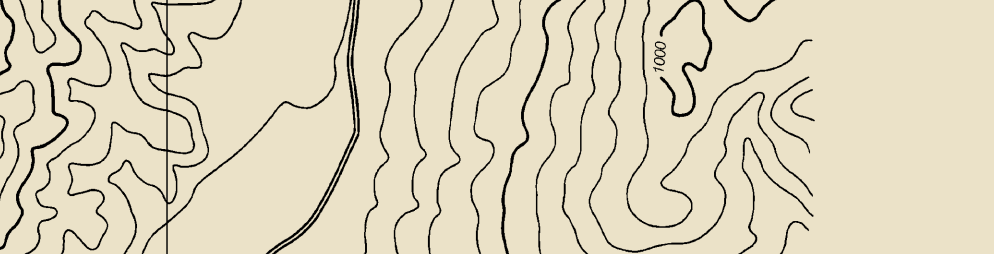
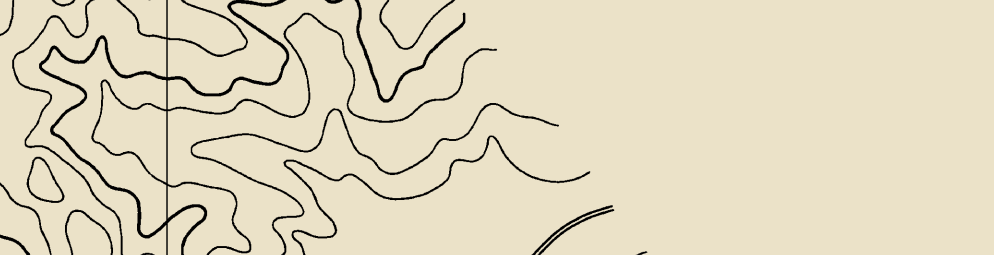
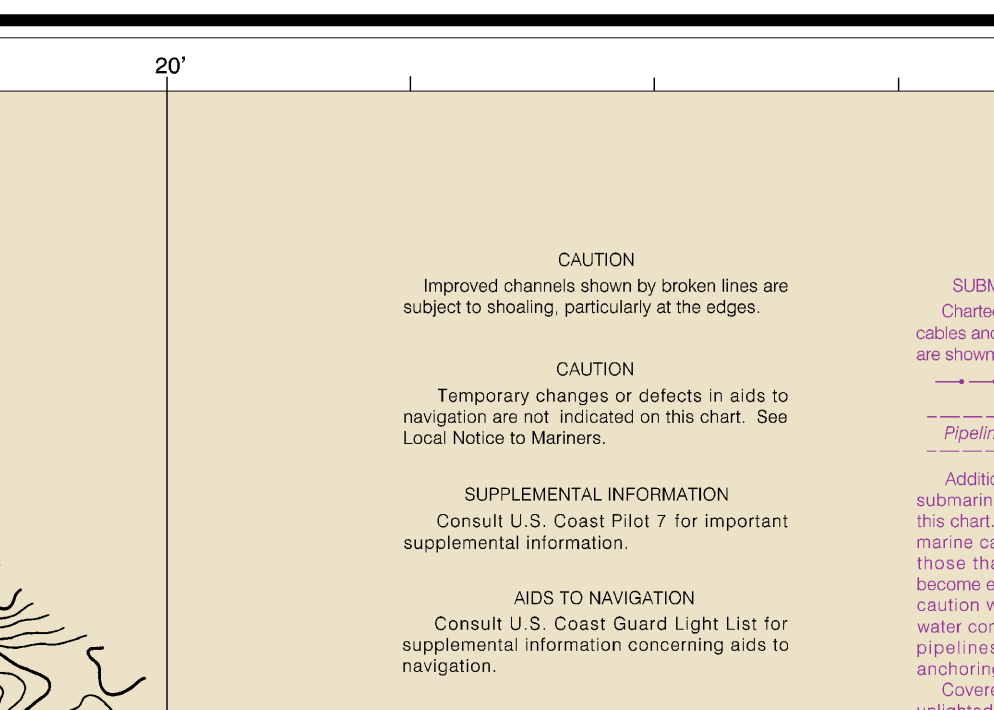
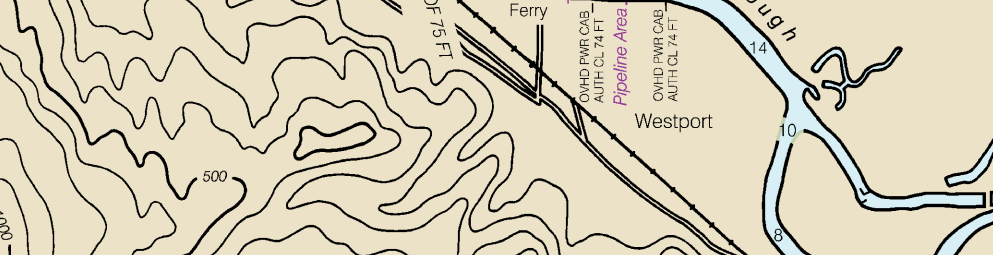
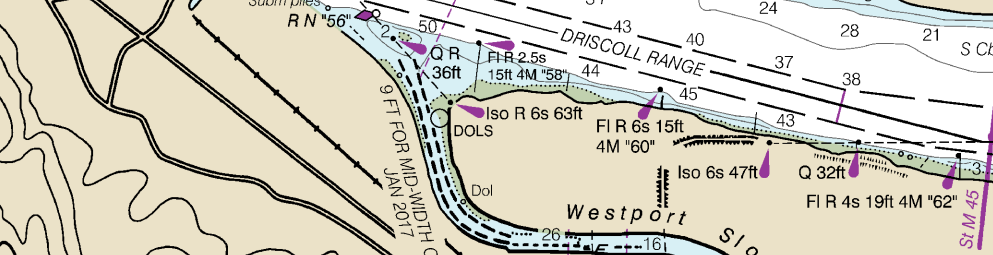
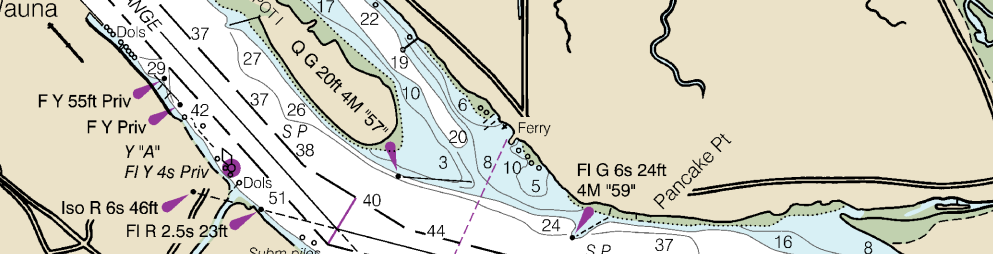
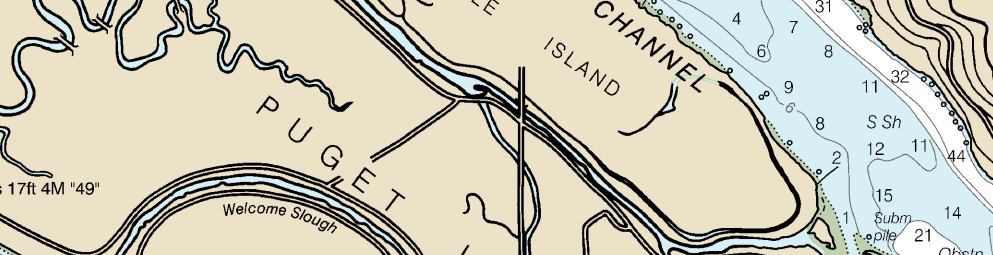
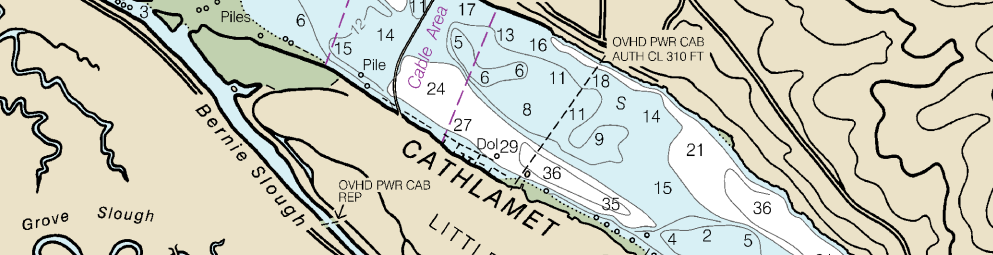
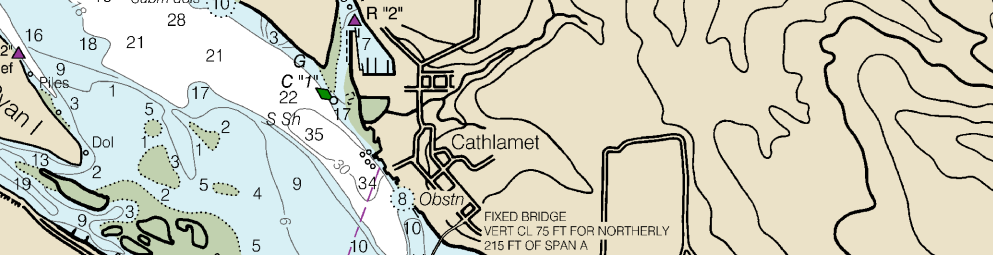
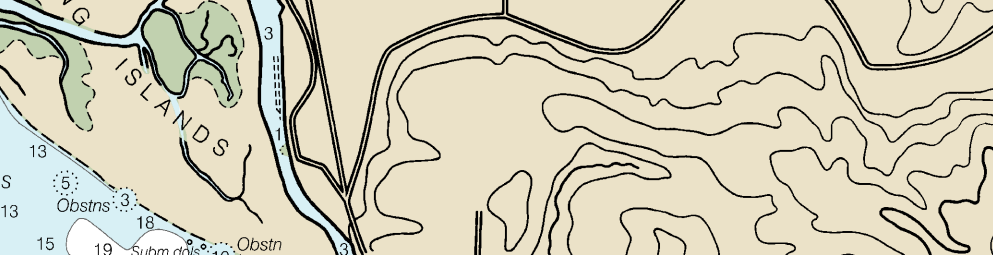
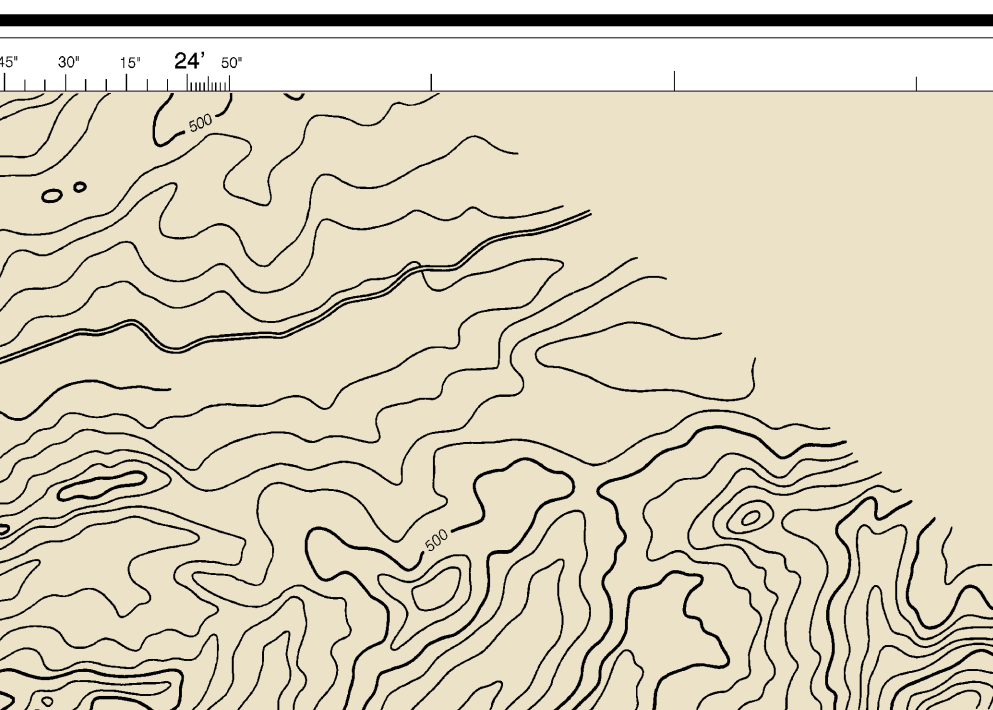
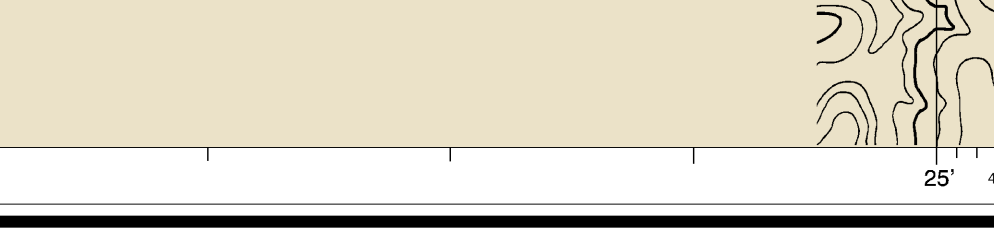
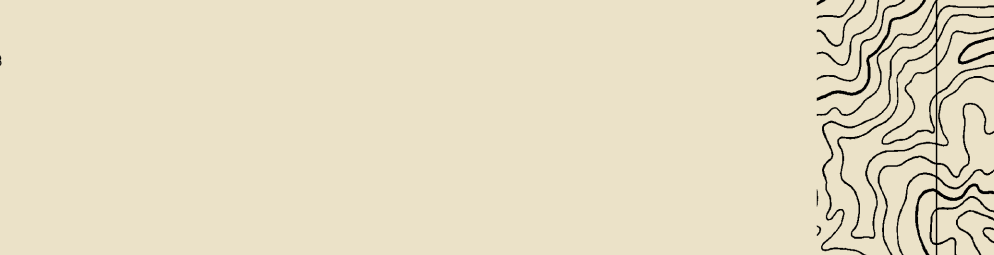
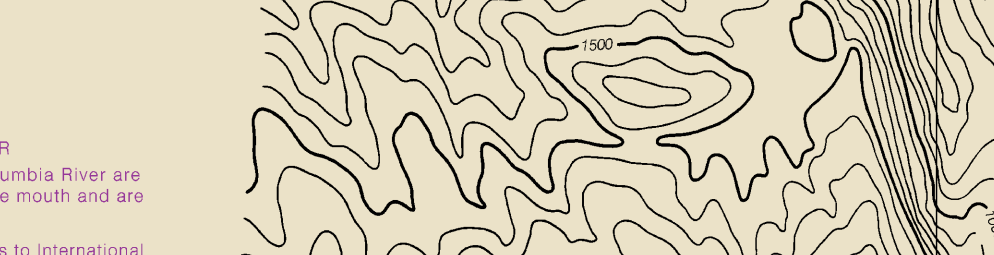
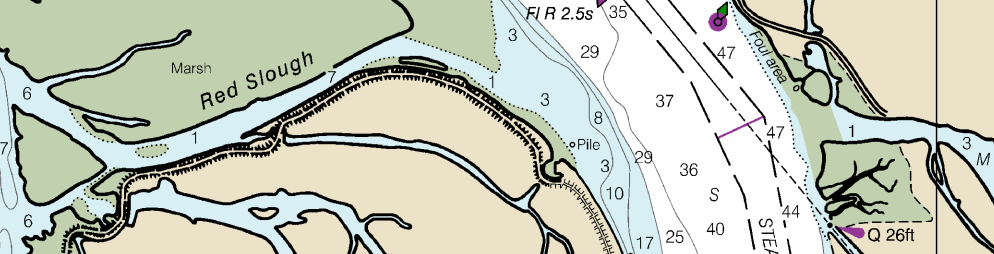
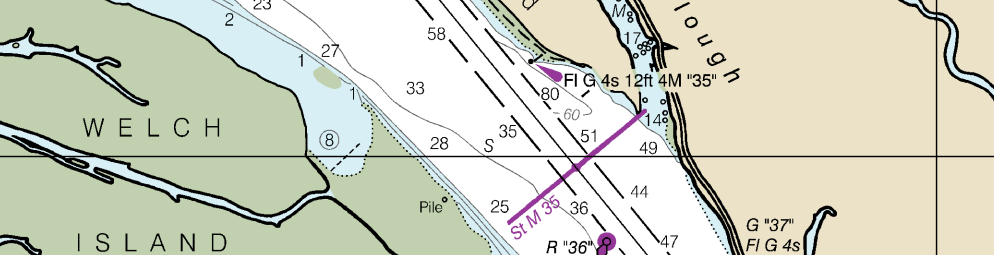
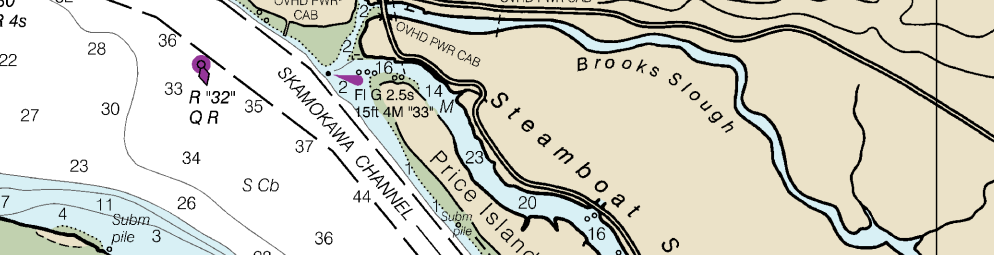
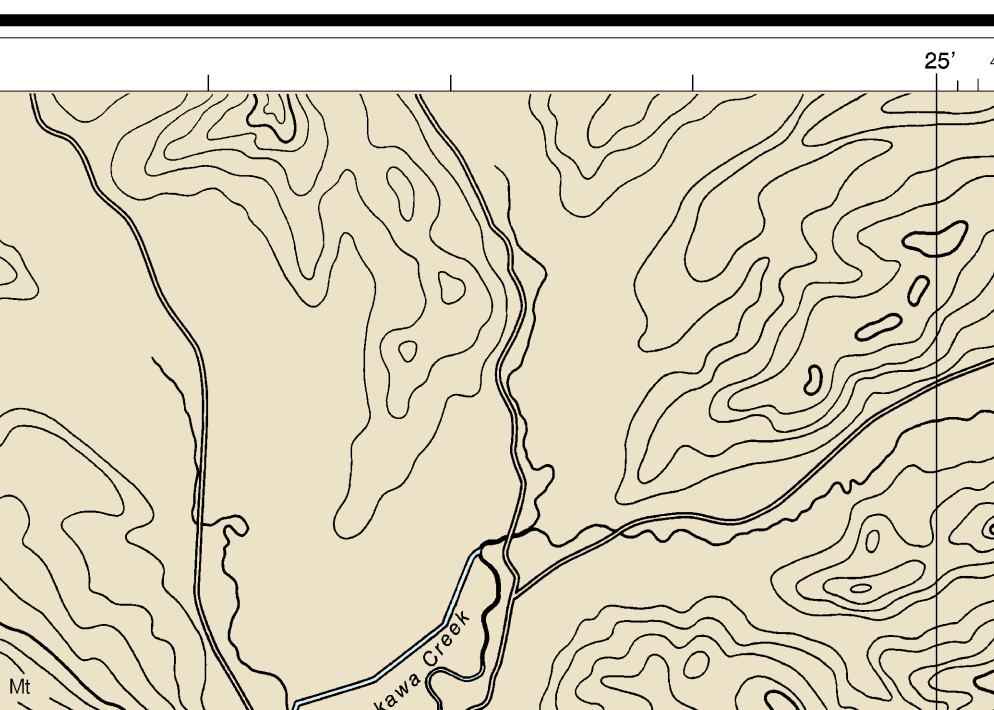
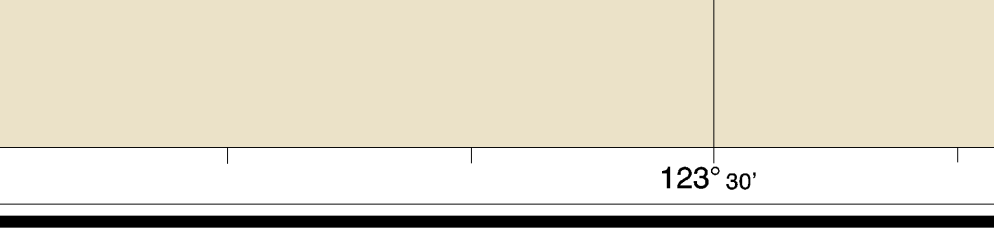
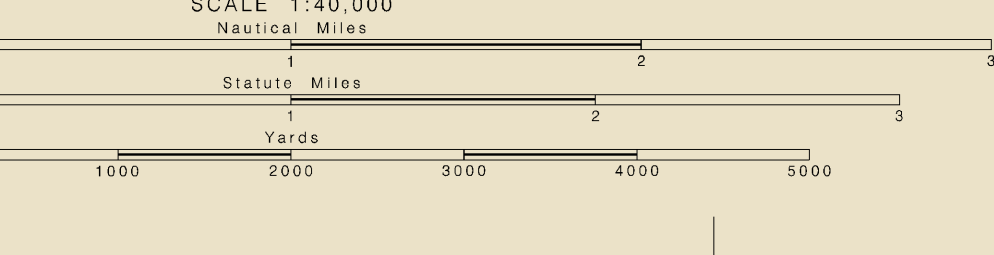
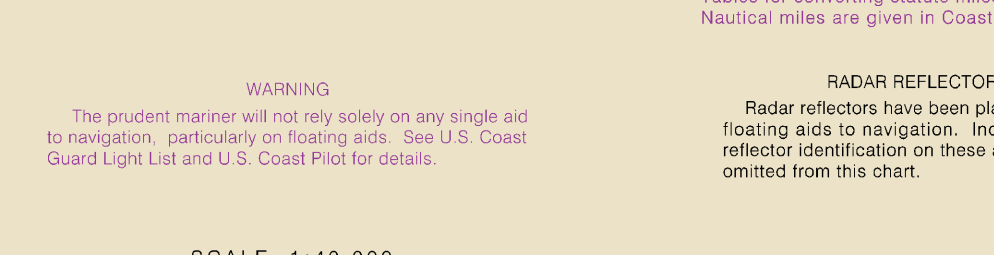
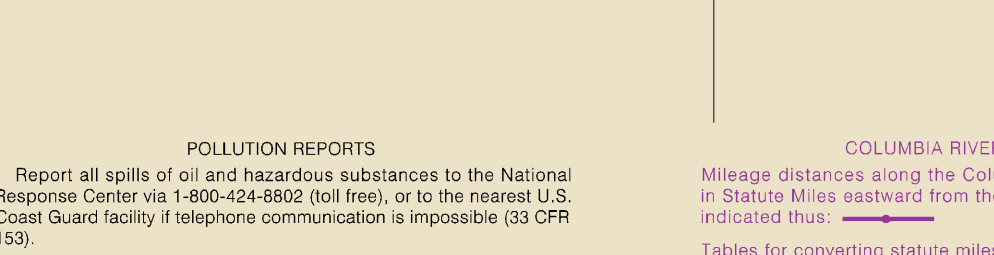
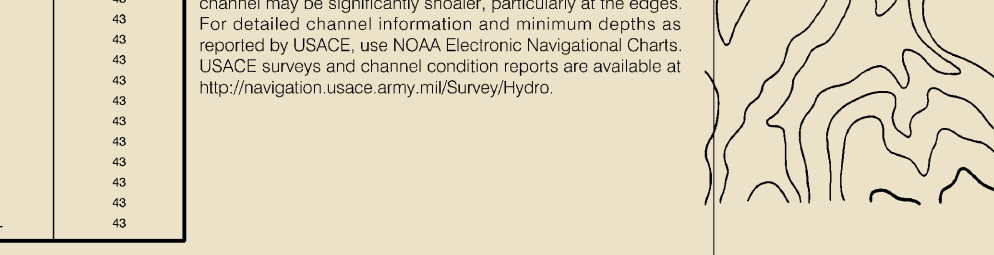
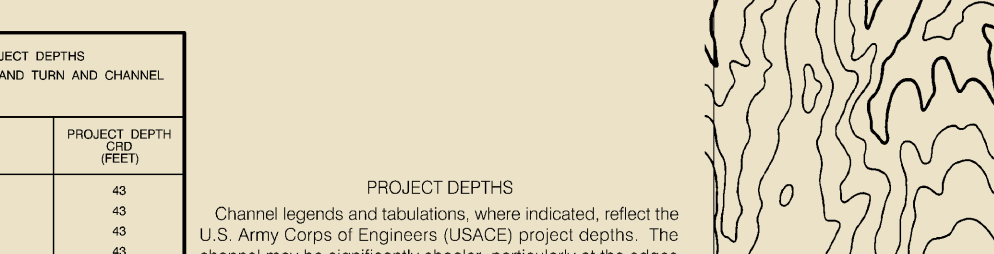
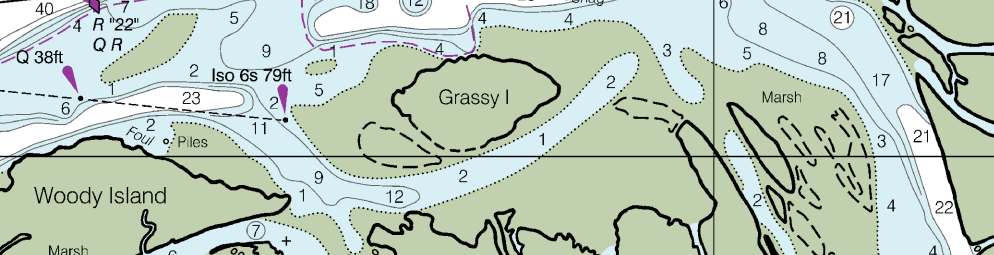
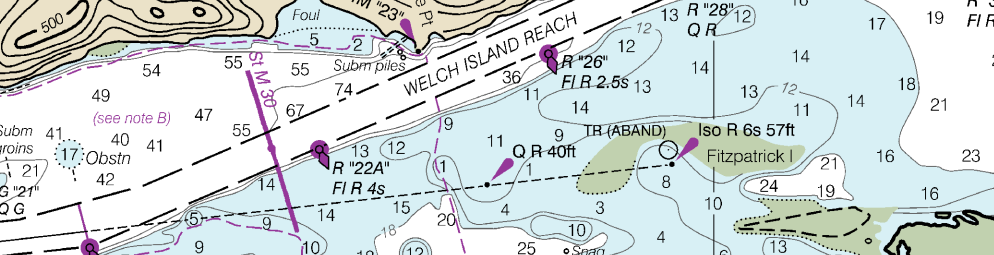
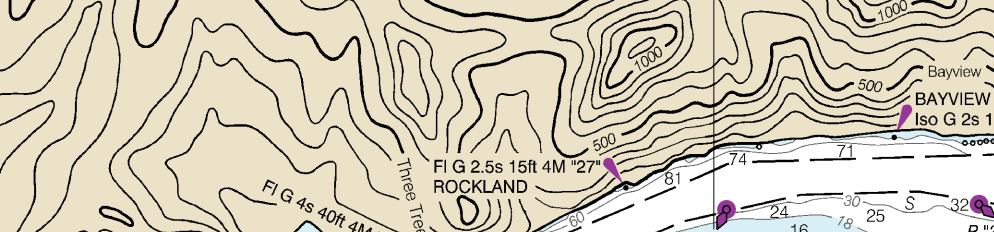
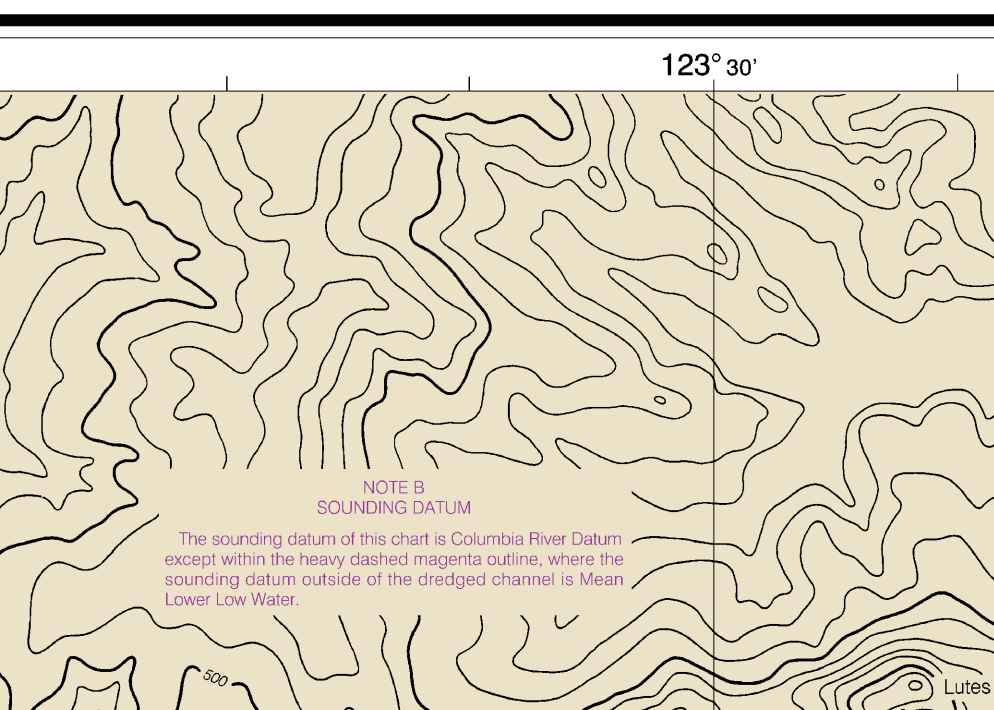
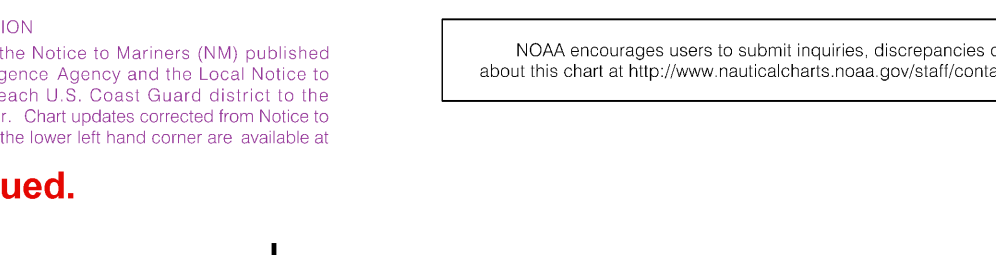
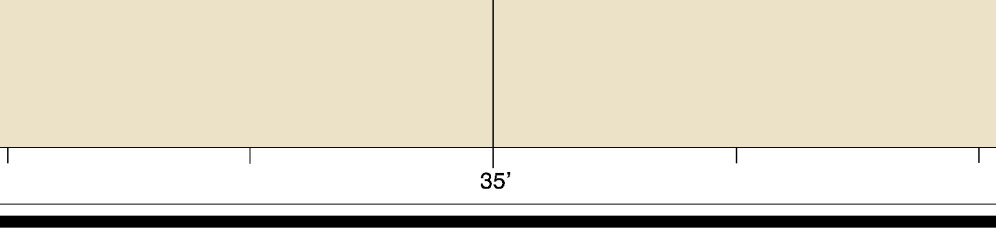
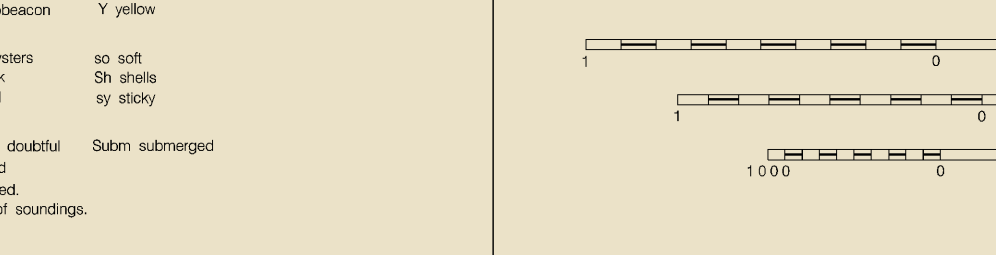
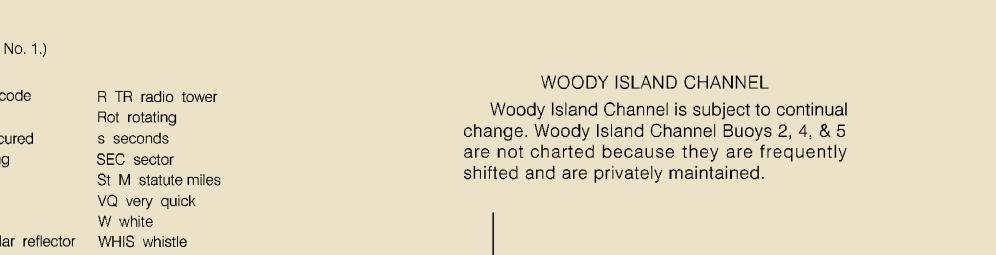
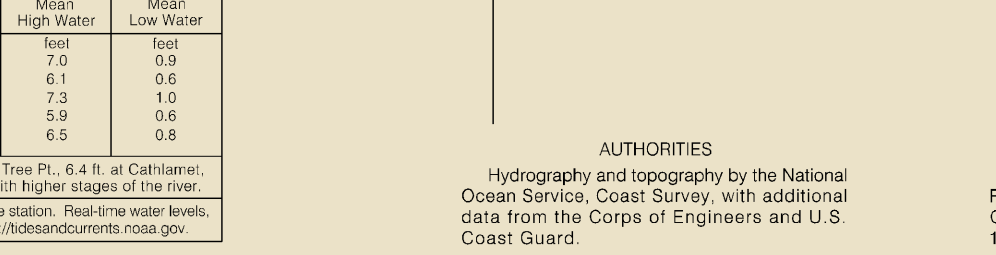
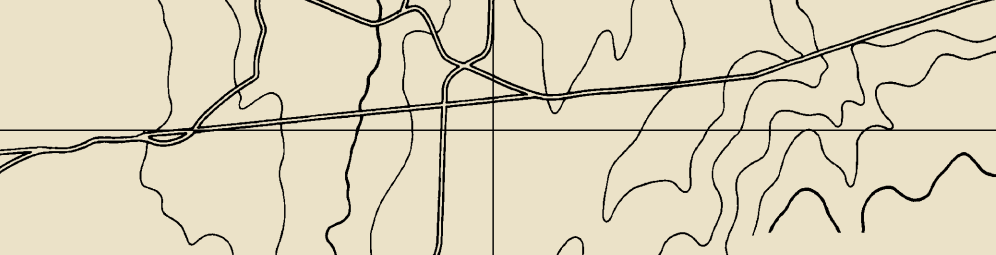
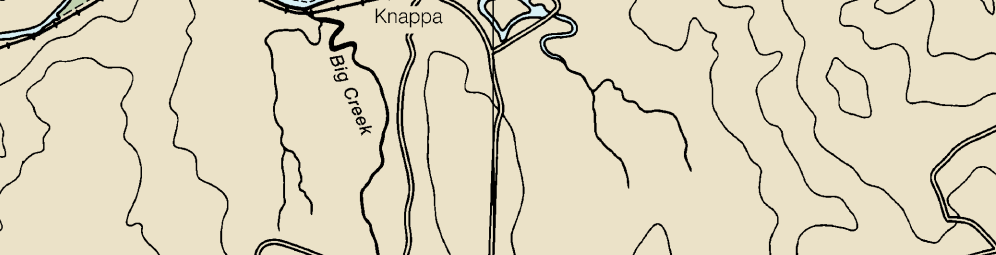
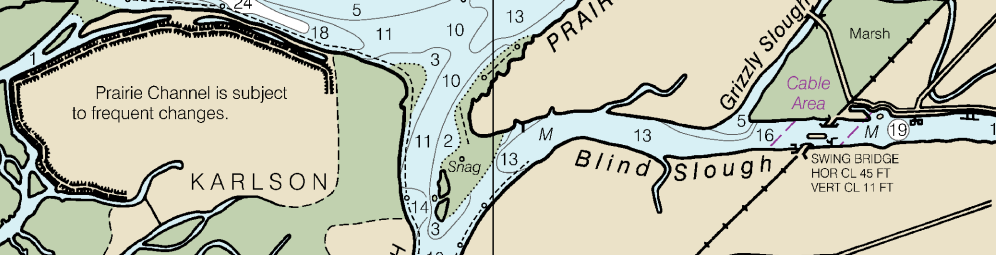
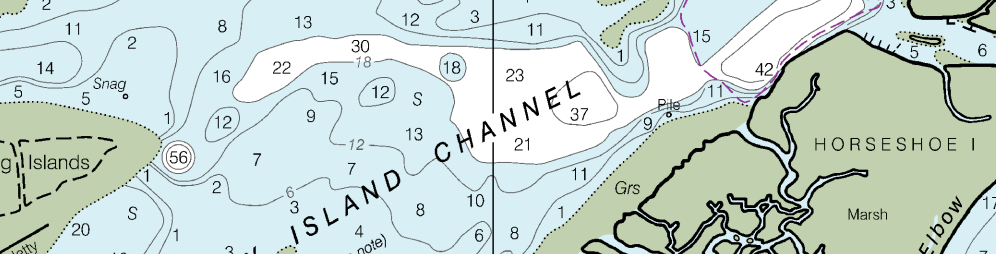
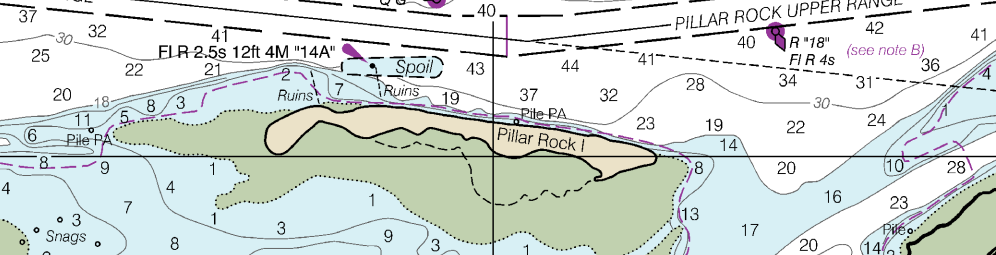
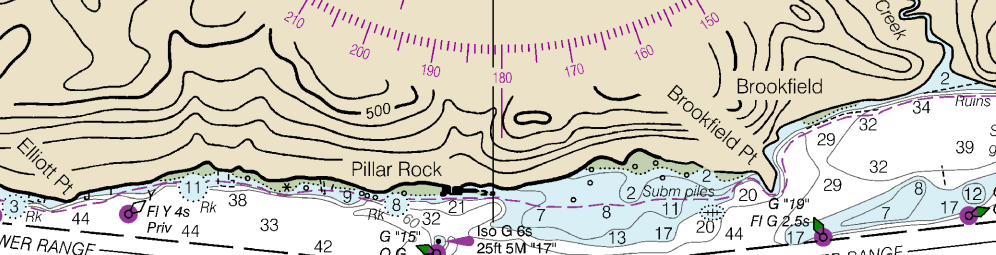
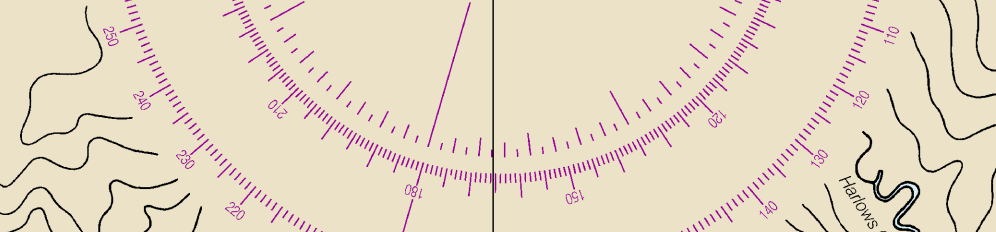
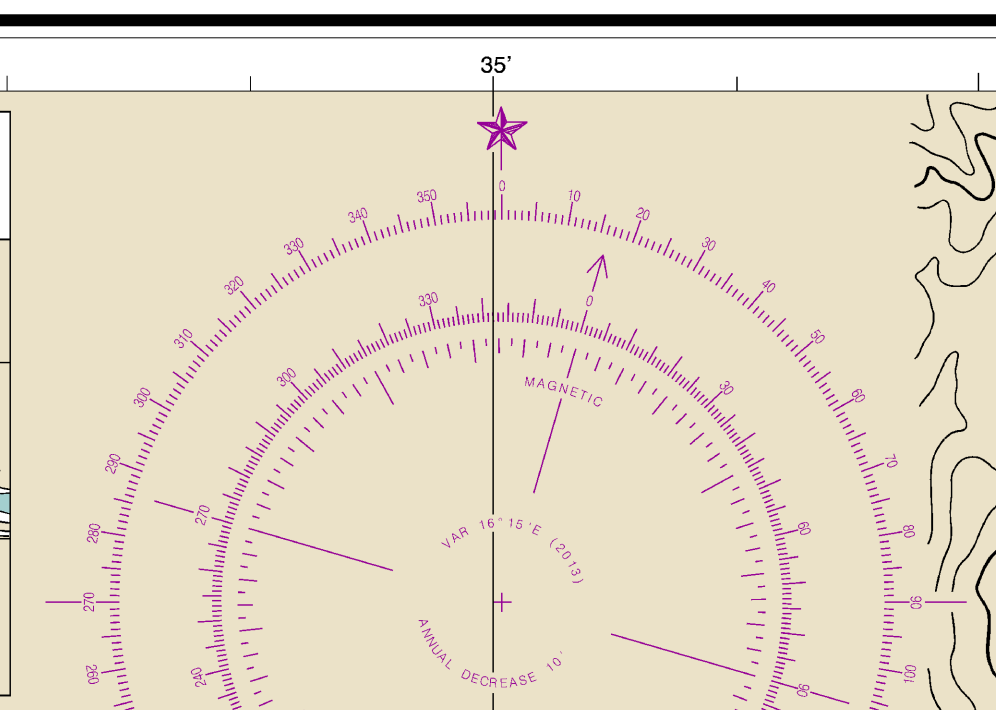
Beaver Block/Columbia River Damages to the South of Bunker Hill Bridge at Crims Island

Beaver Block/Columbia River Damages to the South of Bunker Hill Bridge at Crims Island

NOTE P

Beaver Block/Columbia River Damages to the South of Bunker Hill Bridge at Crims Island

Beaver Block/Columbia River Damages to the South of Bunker Hill Bridge at Crims Island



NOTE Q

Beaver Block/Columbia River Damages to the South of Bunker Hill Bridge at Crims Island

Beaver Block/Columbia River Damages to the South of Bunker Hill Bridge at Crims Island

NOTE R

Beaver Block/Columbia River Damages to the South of Bunker Hill Bridge at Crims Island

Beaver Block/Columbia River Damages to the South of Bunker Hill Bridge at Crims Island

NOTE S

Beaver Block/Columbia River Damages to the South of Bunker Hill Bridge at Crims Island

Beaver Block/Columbia River Damages to the South of Bunker Hill Bridge at Crims Island

NOTE T

Beaver Block/Columbia River Damages to the South of Bunker Hill Bridge at Crims Island

Beaver Block/Columbia River Damages to the South of Bunker Hill Bridge at Crims Island

NOTE U

Beaver Block/Columbia River Damages to the South of Bunker Hill Bridge at Crims Island

Beaver Block/Columbia River Damages to the South of Bunker Hill Bridge at Crims Island

NOTE V

Beaver Block/Columbia River Damages to the South of Bunker Hill Bridge at Crims Island

Beaver Block/Columbia River Damages to the South of Bunker Hill Bridge at Crims Island

NOTE W

Beaver Block/Columbia River Damages to the South of Bunker Hill Bridge at Crims Island

Beaver Block/Columbia River Damages to the South of Bunker Hill Bridge at Crims Island

NOTE X

Beaver Block/Columbia River Damages to the South of Bunker Hill Bridge at Crims Island

Beaver Block/Columbia River Damages to the South of Bunker Hill Bridge at Crims Island

This chart is canceled. No new editions will be issued.

NOAA encourages users to submit inquiries, discrepancies or comments about this chart at <http://www.nauticalcharts.noaa.gov/contact.htm>

NOAA Chart 11004, NW 25th Edition, 2013, Last Correction: 10/2014, Charted by NOAA

To ensure that this chart is printed at the proper scale, the following measure is inches (1:250,000)

SOUNDINGS IN FEET

Published at Washington, D.C. U.S. DEPARTMENT OF COMMERCE NATIONAL OCEANIC AND ATMOSPHERIC ADMINISTRATION NATIONAL OCEAN SERVICE COAST SURVEY

Columbia River, Harrington Pt. to Crims Island SOUNDINGS IN FEET - SCALE 1:40,000